

Scaled data based on original data using
LM-79-08 Approved Method: Electrical and Photometric Measurements of Solid-State
Lighting Products

Test Report Prepared for

Cooper Lighting Solutions

(formerly Eaton)

Brand: NEO-RAY

Report Number: P331478-940

Luminaire Tested: **S122DIW-S290D970U940-4F0-1E-UDD-A1**

Issue Date: 3/3/2020

Test Information

Test Method: LM-79-08
Report Number: P331478-940
REPORT IS SCALED FROM IESNA LM-79-08 TEST DATA (G3-1807-864-8,
Test Lab: INNOVATION CENTER
Issue Date: 3/3/2020
Manufacturer: COOPER LIGHTING SOLUTIONS (FORMERLY EATON)
Product Line: NEO-RAY
Catalog Number: S122DIW-S290D970U940-4F0-1E-UDD-A1
Description: DEFINE 2 DIRECT-INDIRECT WALL MOUNT LED LUMINAIRE
DOWNLIGHT 290 LUMENS PER FOOT, ASYMMETRIC DIFFUSER
UPLIGHT 970 LUMENS PER FOOT, FLUSH SATIN WHITE DIFFUSER
Light Source: -
Ballast/Driver: ELECTRONIC DRIVER

Summary

Lumens per Lamp: N/A
Luminaire Lumens: 4159.7 lumens
Efficiency: N/A
Efficacy: 109.5 lumens/watt
Spacing Criteria (0/90/45): 1.08 / 1.16 / 1.23
Luminous Opening: Rectangular (W 4' x L: 0.17' x H: 0')
CIE Type: Semi-Indirect

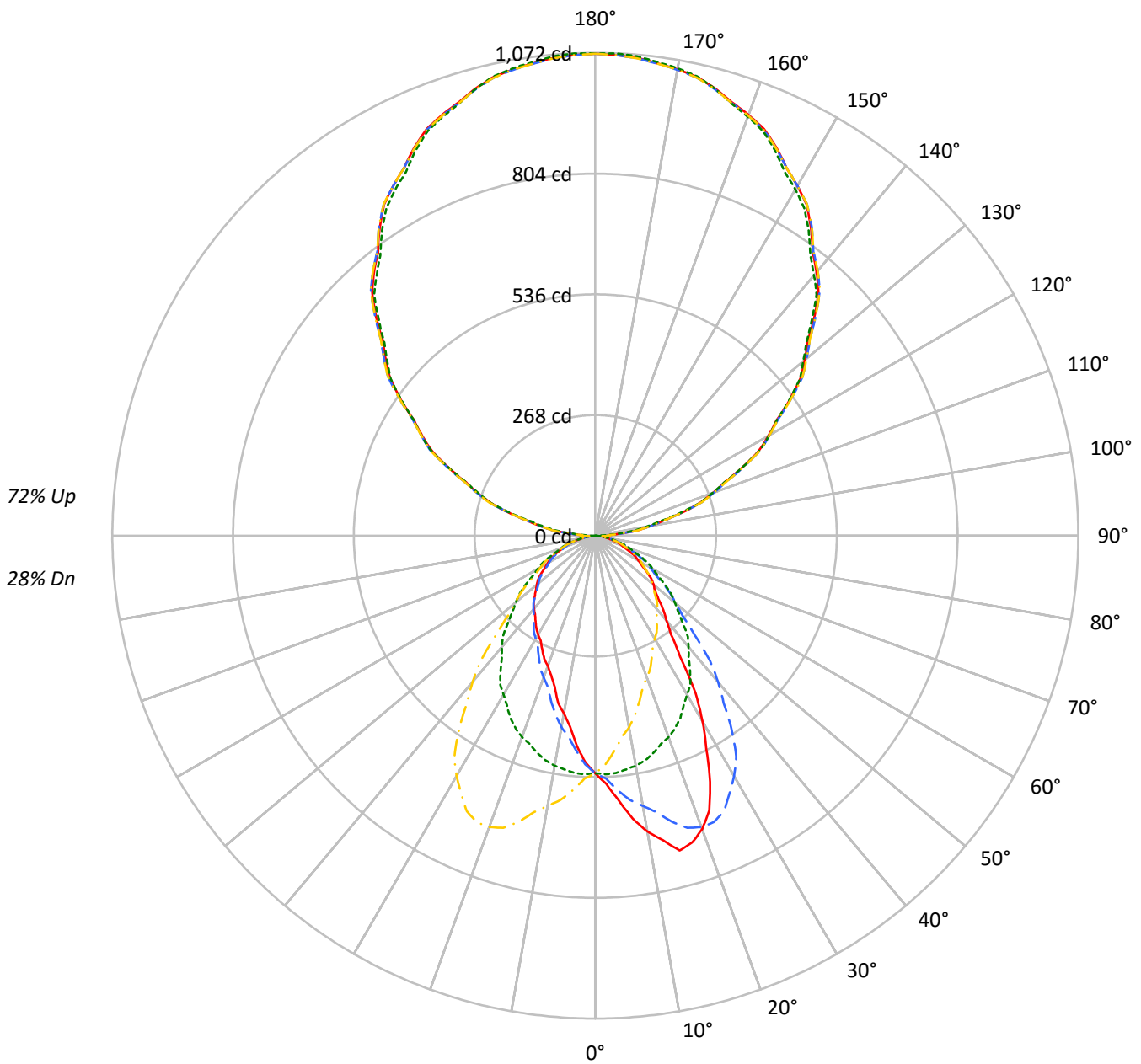
Input Watts (W): 38
Input Voltage (V): 120
Input Current (Ain): NR
Voltage Rise (V): NR
Power Factor: NR
Total Harmonic Distortion (THDi): NR
Frequency (hertz): 60
Stabilization Time: NR
Operation Time: NR
Ambient Temperature (°C): NR
Test Distance: 25 FT



TEST NUMBER: P331478-940

CATALOG NUMBER: S122DIW-S290D970U940-4F0-1E-UDD-A1

Luminous Intensity Polar Plot



— 0°-180° - - 45°-225° ··· 90°-270° - · 135°-315°



TEST NUMBER: P331478-940

CATALOG NUMBER: S122DIW-S290D970U940-4F0-1E-UDD-A1

COEFFICIENT OF UTILIZATION - ZONAL CAVITY METHOD:

| | | | | | | | | | | | | | | | | | | |
|-----|-----|-----|-----|-----|----|----|----|----|----|----|----|----|----|----|----|----|----|----|
| RF | 20 | | | | 20 | | | | 20 | | | | 20 | | | | 20 | |
| RC | 80 | | | | 70 | | | | 50 | | | | 30 | | | | 10 | 0 |
| RW | 70 | 50 | 30 | 10 | 70 | 50 | 30 | 10 | 50 | 30 | 10 | 50 | 30 | 10 | 50 | 30 | 10 | 0 |
| RCR | | | | | | | | | | | | | | | | | | |
| 0 | 102 | 102 | 102 | 102 | 91 | 91 | 91 | 91 | 71 | 71 | 71 | 53 | 53 | 53 | 36 | 36 | 36 | 28 |
| 1 | 93 | 89 | 85 | 82 | 83 | 80 | 77 | 74 | 63 | 61 | 59 | 47 | 45 | 44 | 32 | 31 | 31 | 24 |
| 2 | 85 | 78 | 72 | 67 | 76 | 70 | 65 | 61 | 55 | 52 | 49 | 41 | 39 | 37 | 29 | 27 | 26 | 21 |
| 3 | 78 | 69 | 62 | 56 | 69 | 62 | 56 | 51 | 49 | 45 | 41 | 37 | 34 | 32 | 26 | 24 | 23 | 18 |
| 4 | 71 | 61 | 53 | 48 | 63 | 55 | 48 | 44 | 43 | 39 | 35 | 33 | 30 | 27 | 23 | 21 | 20 | 15 |
| 5 | 65 | 54 | 47 | 41 | 58 | 49 | 42 | 37 | 39 | 34 | 31 | 30 | 26 | 24 | 21 | 19 | 17 | 14 |
| 6 | 60 | 49 | 41 | 35 | 54 | 44 | 37 | 32 | 35 | 30 | 27 | 27 | 23 | 21 | 19 | 17 | 15 | 12 |
| 7 | 55 | 44 | 36 | 31 | 50 | 40 | 33 | 28 | 32 | 27 | 23 | 24 | 21 | 19 | 17 | 15 | 14 | 11 |
| 8 | 51 | 40 | 32 | 27 | 46 | 36 | 30 | 25 | 29 | 24 | 21 | 22 | 19 | 17 | 16 | 14 | 12 | 10 |
| 9 | 48 | 36 | 29 | 24 | 43 | 33 | 27 | 22 | 26 | 22 | 19 | 20 | 17 | 15 | 15 | 13 | 11 | 9 |
| 10 | 45 | 33 | 26 | 22 | 40 | 30 | 24 | 20 | 24 | 20 | 17 | 19 | 16 | 13 | 14 | 12 | 10 | 8 |

AVERAGE LUMINANCE (cd/sqm):

| | 0° | 90° | 180° | 270° |
|-----|-------|------|------|------|
| 0° | 8510 | 8510 | 8510 | 8510 |
| 5° | 9540 | 8566 | 7590 | 8566 |
| 10° | 10932 | 8496 | 6568 | 8496 |
| 15° | 12094 | 8339 | 5804 | 8339 |
| 20° | 11911 | 8172 | 5290 | 8172 |
| 25° | 10739 | 7949 | 4965 | 7949 |
| 30° | 8874 | 7594 | 4728 | 7594 |
| 35° | 6467 | 7222 | 4559 | 7222 |
| 40° | 5166 | 6785 | 4466 | 6785 |
| 45° | 4514 | 6277 | 4338 | 6277 |
| 50° | 4245 | 5785 | 4253 | 5785 |
| 55° | 3910 | 5286 | 4138 | 5286 |
| 60° | 3584 | 4753 | 3965 | 4753 |
| 65° | 3266 | 4279 | 3790 | 4279 |
| 70° | 2965 | 3814 | 3541 | 3814 |
| 75° | 2633 | 3300 | 3132 | 3300 |
| 80° | 2259 | 2724 | 2520 | 2724 |
| 85° | 2038 | 2038 | 1501 | 2038 |



TEST NUMBER: P331478-940

CATALOG NUMBER: S122DIW-S290D970U940-4F0-1E-UDD-A1

ZONAL LUMENS:

| Zone | Lumens | % Fixture |
|-----------|--------|-----------|
| 0°-10° | 50.2 | 1.2 |
| 10°-20° | 145.9 | 3.5 |
| 20°-30° | 211.8 | 5.1 |
| 30°-40° | 223.5 | 5.4 |
| 40°-50° | 197.9 | 4.8 |
| 50°-60° | 157.9 | 3.8 |
| 60°-70° | 107.3 | 2.6 |
| 70°-80° | 55.0 | 1.3 |
| 80°-90° | 17.5 | 0.4 |
| 90°-100° | 67.8 | 1.6 |
| 100°-110° | 210.6 | 5.1 |
| 110°-120° | 360.0 | 8.7 |
| 120°-130° | 473.5 | 11.4 |
| 130°-140° | 531.4 | 12.8 |
| 140°-150° | 521.1 | 12.5 |
| 150°-160° | 437.0 | 10.5 |
| 160°-170° | 289.9 | 7.0 |
| 170°-180° | 101.3 | 2.4 |
| 0°-30° | 407.9 | 9.8 |
| 0°-40° | 631.4 | 15.2 |
| 0°-60° | 987.2 | 23.7 |
| 0°-90° | 1167.1 | 28.1 |
| 90°-120° | 638.5 | 15.3 |
| 90°-150° | 2164.4 | 52.0 |
| 90°-180° | 2993.0 | 72.0 |
| 0°-180° | 4159.7 | 100.0 |

CANDELA DISTRIBUTION:

| | 0° | 90° | 180° | 270° | 360° | Flux |
|------|------|------|------|------|------|------|
| 0° | 527 | 527 | 527 | 527 | 527 | |
| 5° | 589 | 528 | 468 | 528 | 589 | 59 |
| 15° | 724 | 499 | 347 | 499 | 724 | 200 |
| 25° | 603 | 446 | 279 | 446 | 603 | 272 |
| 35° | 328 | 366 | 231 | 366 | 328 | 213 |
| 45° | 198 | 275 | 190 | 275 | 198 | 155 |
| 55° | 139 | 188 | 147 | 188 | 139 | 125 |
| 65° | 86 | 112 | 99 | 112 | 86 | 85 |
| 75° | 42 | 53 | 50 | 53 | 42 | 45 |
| 85° | 11 | 11 | 8 | 11 | 11 | 13 |
| 90° | 31 | 1 | 31 | 1 | 31 | 14 |
| 95° | 56 | 47 | 56 | 47 | 56 | 62 |
| 105° | 200 | 194 | 200 | 194 | 200 | 211 |
| 115° | 361 | 361 | 361 | 361 | 361 | 357 |
| 125° | 527 | 526 | 527 | 526 | 527 | 470 |
| 135° | 688 | 680 | 688 | 680 | 688 | 530 |
| 145° | 835 | 826 | 835 | 826 | 835 | 521 |
| 155° | 951 | 944 | 951 | 944 | 951 | 438 |
| 165° | 1028 | 1027 | 1028 | 1027 | 1028 | 290 |
| 175° | 1065 | 1068 | 1065 | 1068 | 1065 | 101 |
| 180° | 1070 | 1070 | 1070 | 1070 | 1070 | |



TEST NUMBER: P331478-940

CATALOG NUMBER: S122DIW-S290D970U940-4F0-1E-UDD-A1

CANDELA DISTRIBUTION (FULL):

| | 0° | 5° | 10° | 15° | 20° | 25° | 30° | 35° | 40° | 45° | 50° |
|--------|-------|-------|-------|-------|-------|-------|-------|-------|-------|-------|-------|
| 0° | 527.1 | 527.1 | 527.1 | 527.1 | 527.1 | 527.1 | 527.1 | 527.1 | 527.1 | 527.1 | 527.1 |
| 2.5° | 551.3 | 551.5 | 551.9 | 549.3 | 548.9 | 548.9 | 546.7 | 544.7 | 542.4 | 539.4 | 539.8 |
| 5° | 588.6 | 590.8 | 591.7 | 589.2 | 585.6 | 585.2 | 581.8 | 576.1 | 570.8 | 566.6 | 563.6 |
| 7.5° | 633.1 | 634.0 | 632.0 | 628.8 | 626.2 | 621.3 | 614.8 | 608.6 | 599.8 | 591.7 | 585.8 |
| 10° | 666.8 | 668.1 | 664.6 | 660.0 | 656.1 | 650.4 | 641.1 | 631.6 | 620.1 | 608.9 | 600.0 |
| 12.5° | 692.4 | 695.4 | 691.0 | 690.5 | 683.9 | 676.0 | 664.9 | 660.1 | 643.9 | 628.4 | 618.8 |
| 15° | 723.5 | 723.4 | 723.8 | 719.9 | 715.1 | 713.8 | 702.1 | 689.3 | 666.5 | 657.3 | 641.5 |
| 17.5° | 714.5 | 717.6 | 719.1 | 719.0 | 718.9 | 718.1 | 714.3 | 706.3 | 694.8 | 680.0 | 661.8 |
| 20° | 693.2 | 697.2 | 697.9 | 702.5 | 705.2 | 708.6 | 710.0 | 707.8 | 700.7 | 688.3 | 672.5 |
| 22.5° | 660.1 | 661.3 | 663.2 | 670.4 | 676.1 | 684.7 | 689.2 | 696.8 | 694.0 | 688.0 | 674.8 |
| 25° | 602.8 | 600.8 | 607.9 | 611.5 | 624.7 | 638.5 | 648.5 | 659.3 | 669.1 | 674.9 | 671.1 |
| 27.5° | 534.0 | 531.0 | 541.6 | 551.3 | 562.0 | 576.9 | 592.4 | 610.6 | 625.8 | 644.9 | 651.4 |
| 30° | 476.0 | 477.9 | 487.9 | 498.3 | 514.5 | 535.6 | 553.0 | 573.0 | 594.8 | 616.0 | 630.8 |
| 32.5° | 413.5 | 420.4 | 426.9 | 442.7 | 457.0 | 480.5 | 506.0 | 531.1 | 558.1 | 582.3 | 605.2 |
| 35° | 328.1 | 336.3 | 345.2 | 356.7 | 376.7 | 400.0 | 425.0 | 458.8 | 495.7 | 528.7 | 555.8 |
| 37.5° | 276.3 | 274.9 | 280.0 | 288.4 | 304.6 | 323.4 | 352.1 | 385.5 | 428.9 | 467.7 | 506.0 |
| 40° | 245.1 | 244.3 | 247.9 | 255.7 | 268.0 | 281.8 | 306.9 | 336.3 | 376.6 | 424.0 | 469.6 |
| 42.5° | 223.7 | 224.2 | 226.2 | 231.7 | 240.1 | 251.5 | 270.3 | 295.2 | 332.2 | 376.8 | 425.8 |
| 45° | 197.7 | 199.1 | 201.3 | 204.0 | 208.8 | 218.2 | 228.7 | 246.6 | 275.7 | 313.0 | 361.1 |
| 47.5° | 179.0 | 179.1 | 181.3 | 183.6 | 186.5 | 191.7 | 200.4 | 211.5 | 232.1 | 262.4 | 303.9 |
| 50° | 169.0 | 167.6 | 169.2 | 170.9 | 174.0 | 177.6 | 183.3 | 193.9 | 207.6 | 232.1 | 266.8 |
| 52.5° | 156.6 | 156.7 | 158.1 | 158.8 | 161.5 | 165.1 | 170.3 | 177.6 | 190.1 | 209.3 | 237.7 |
| 55° | 138.9 | 140.0 | 140.8 | 142.0 | 144.5 | 147.0 | 151.1 | 156.0 | 165.7 | 180.0 | 201.2 |
| 57.5° | 122.3 | 122.7 | 123.5 | 125.8 | 127.3 | 129.7 | 133.6 | 138.0 | 144.4 | 155.0 | 170.9 |
| 60° | 111.0 | 111.0 | 112.6 | 113.6 | 115.7 | 118.1 | 121.1 | 125.4 | 131.1 | 139.7 | 152.6 |
| 62.5° | 100.7 | 100.5 | 101.1 | 102.8 | 104.3 | 106.6 | 109.6 | 113.2 | 118.6 | 126.4 | 136.8 |
| 65° | 85.5 | 85.1 | 86.3 | 86.7 | 88.3 | 90.5 | 93.0 | 96.8 | 101.1 | 106.7 | 116.1 |
| 67.5° | 70.9 | 71.4 | 72.1 | 72.8 | 73.7 | 76.1 | 77.7 | 80.3 | 84.0 | 88.7 | 95.0 |
| 70° | 62.8 | 62.8 | 62.8 | 63.4 | 64.6 | 65.8 | 67.4 | 69.6 | 73.1 | 77.1 | 82.8 |
| 72.5° | 53.7 | 54.4 | 55.0 | 54.7 | 56.2 | 56.9 | 58.9 | 60.1 | 63.4 | 66.0 | 71.0 |
| 75° | 42.2 | 42.2 | 42.2 | 43.2 | 43.8 | 44.3 | 45.6 | 46.8 | 48.4 | 51.6 | 54.3 |
| 77.5° | 31.5 | 31.4 | 31.6 | 31.8 | 32.5 | 33.2 | 33.5 | 34.6 | 36.1 | 37.6 | 39.9 |
| 80° | 24.3 | 24.7 | 24.9 | 25.3 | 25.3 | 25.7 | 25.9 | 27.4 | 28.4 | 29.3 | 30.8 |
| 82.5° | 18.8 | 18.9 | 18.9 | 19.0 | 19.2 | 19.4 | 20.0 | 20.4 | 20.8 | 21.6 | 22.6 |
| 85° | 11.0 | 10.7 | 10.7 | 11.1 | 11.0 | 11.0 | 11.3 | 11.8 | 11.8 | 11.9 | 12.6 |
| 87.5° | 10.3 | 10.3 | 10.4 | 10.3 | 10.2 | 10.3 | 10.4 | 10.3 | 10.6 | 10.9 | 10.2 |
| 90° | 30.7 | 30.5 | 30.3 | 30.1 | 29.9 | 30.0 | 30.4 | 30.8 | 31.2 | 31.6 | 27.2 |
| 92.5° | 29.2 | 29.2 | 29.2 | 29.2 | 29.1 | 29.1 | 29.0 | 28.9 | 28.8 | 28.7 | 27.6 |
| 95° | 56.0 | 56.4 | 56.8 | 57.2 | 57.6 | 57.8 | 57.8 | 57.8 | 57.8 | 57.8 | 57.4 |
| 97.5° | 97.0 | 97.0 | 97.1 | 97.1 | 97.2 | 97.2 | 97.2 | 97.2 | 97.2 | 97.2 | 96.4 |
| 100° | 123.8 | 123.9 | 124.1 | 124.3 | 124.6 | 124.7 | 124.7 | 124.7 | 124.7 | 124.7 | 124.0 |
| 102.5° | 154.1 | 154.3 | 154.4 | 154.7 | 154.9 | 154.9 | 154.7 | 154.6 | 154.4 | 154.3 | 153.5 |
| 105° | 200.5 | 200.5 | 200.5 | 200.5 | 200.5 | 200.3 | 199.9 | 199.5 | 199.1 | 198.7 | 198.3 |
| 107.5° | 244.2 | 245.1 | 246.0 | 247.0 | 247.9 | 248.3 | 248.2 | 248.0 | 247.8 | 247.6 | 247.6 |
| 110° | 278.2 | 278.7 | 279.4 | 280.0 | 280.6 | 280.9 | 280.9 | 280.9 | 280.9 | 280.9 | 280.9 |



TEST NUMBER: P331478-940

CATALOG NUMBER: S122DIW-S290D970U940-4F0-1E-UDD-A1

CANDELA DISTRIBUTION (continued):

| | 0° | 5° | 10° | 15° | 20° | 25° | 30° | 35° | 40° | 45° | 50° |
|--------|--------|--------|--------|--------|--------|--------|--------|--------|--------|--------|--------|
| 112.5° | 310.7 | 311.1 | 311.6 | 312.0 | 312.5 | 312.9 | 313.4 | 313.9 | 314.3 | 314.9 | 315.0 |
| 115° | 361.2 | 361.9 | 362.5 | 363.1 | 363.6 | 364.1 | 364.3 | 364.4 | 364.7 | 364.9 | 365.2 |
| 117.5° | 409.5 | 410.1 | 410.7 | 411.3 | 411.9 | 412.4 | 413.0 | 413.4 | 413.9 | 414.4 | 415.5 |
| 120° | 443.4 | 444.1 | 444.7 | 445.2 | 445.9 | 446.2 | 446.2 | 446.2 | 446.2 | 446.2 | 447.8 |
| 122.5° | 476.7 | 477.2 | 477.6 | 478.0 | 478.5 | 478.9 | 479.4 | 479.9 | 480.4 | 480.8 | 482.0 |
| 125° | 527.4 | 527.6 | 527.9 | 528.1 | 528.2 | 528.7 | 529.2 | 529.9 | 530.5 | 531.1 | 531.6 |
| 127.5° | 573.7 | 574.4 | 575.0 | 575.6 | 576.2 | 576.9 | 577.7 | 578.4 | 579.1 | 579.9 | 580.6 |
| 130° | 606.9 | 607.7 | 608.5 | 609.3 | 610.1 | 610.7 | 611.2 | 611.5 | 612.0 | 612.3 | 612.8 |
| 132.5° | 638.7 | 639.4 | 640.0 | 640.7 | 641.3 | 642.0 | 642.9 | 643.8 | 644.7 | 645.6 | 645.5 |
| 135° | 688.2 | 688.8 | 689.4 | 690.0 | 690.6 | 691.0 | 691.3 | 691.4 | 691.6 | 691.8 | 691.4 |
| 137.5° | 733.0 | 733.8 | 734.6 | 735.4 | 736.2 | 736.7 | 736.9 | 737.0 | 737.2 | 737.4 | 736.8 |
| 140° | 764.1 | 764.9 | 765.7 | 766.5 | 767.3 | 767.7 | 767.7 | 767.7 | 767.7 | 767.7 | 766.7 |
| 142.5° | 792.3 | 793.1 | 793.9 | 794.7 | 795.5 | 795.8 | 795.7 | 795.5 | 795.3 | 795.1 | 794.5 |
| 145° | 834.6 | 835.4 | 836.2 | 837.0 | 837.8 | 838.0 | 837.9 | 837.7 | 837.4 | 837.2 | 836.1 |
| 147.5° | 872.3 | 873.1 | 873.8 | 874.6 | 875.3 | 875.5 | 875.0 | 874.6 | 874.1 | 873.7 | 872.9 |
| 150° | 896.9 | 897.4 | 898.0 | 898.7 | 899.3 | 899.3 | 898.7 | 898.0 | 897.4 | 896.9 | 896.1 |
| 152.5° | 920.0 | 920.7 | 921.5 | 922.3 | 923.0 | 923.0 | 922.3 | 921.5 | 920.7 | 920.0 | 919.0 |
| 155° | 951.0 | 951.6 | 952.3 | 952.9 | 953.4 | 953.2 | 952.3 | 951.3 | 950.2 | 949.2 | 948.6 |
| 157.5° | 977.8 | 978.7 | 979.7 | 980.7 | 981.6 | 981.4 | 980.1 | 978.7 | 977.3 | 976.0 | 975.6 |
| 160° | 994.4 | 995.2 | 996.0 | 996.8 | 997.6 | 997.4 | 996.2 | 995.0 | 993.8 | 992.6 | 992.4 |
| 162.5° | 1008.9 | 1009.8 | 1010.8 | 1011.7 | 1012.7 | 1012.5 | 1011.1 | 1009.8 | 1008.4 | 1007.0 | 1006.8 |
| 165° | 1027.8 | 1028.9 | 1029.8 | 1030.8 | 1031.8 | 1031.6 | 1030.2 | 1028.9 | 1027.4 | 1026.0 | 1026.0 |
| 167.5° | 1043.4 | 1044.4 | 1045.4 | 1046.5 | 1047.5 | 1047.3 | 1046.0 | 1044.6 | 1043.1 | 1041.7 | 1041.8 |
| 170° | 1051.3 | 1052.5 | 1053.7 | 1054.9 | 1056.1 | 1056.1 | 1054.6 | 1053.2 | 1051.8 | 1050.4 | 1050.6 |
| 172.5° | 1057.8 | 1059.0 | 1060.2 | 1061.4 | 1062.7 | 1062.5 | 1061.1 | 1059.7 | 1058.3 | 1056.9 | 1057.1 |
| 175° | 1064.9 | 1066.0 | 1067.3 | 1068.4 | 1069.7 | 1069.5 | 1068.2 | 1066.8 | 1065.3 | 1063.9 | 1064.3 |
| 177.5° | 1068.1 | 1069.1 | 1070.1 | 1070.9 | 1071.9 | 1071.9 | 1070.9 | 1070.1 | 1069.1 | 1068.1 | 1068.4 |
| 180° | 1070.2 | 1070.2 | 1070.2 | 1070.2 | 1070.2 | 1070.2 | 1070.2 | 1070.2 | 1070.2 | 1070.2 | 1070.2 |



TEST NUMBER: P331478-940

CATALOG NUMBER: S122DIW-S290D970U940-4F0-1E-UDD-A1

CANDELA DISTRIBUTION (continued):

| | 55° | 60° | 65° | 70° | 75° | 80° | 85° | 90° | 95° | 100° | 105° |
|--------|-------|-------|-------|-------|-------|-------|-------|-------|-------|-------|-------|
| 0° | 527.1 | 527.1 | 527.1 | 527.1 | 527.1 | 527.1 | 527.1 | 527.1 | 527.1 | 527.1 | 527.1 |
| 2.5° | 540.8 | 539.6 | 538.8 | 535.8 | 533.2 | 530.7 | 529.9 | 530.1 | 526.6 | 523.2 | 521.7 |
| 5° | 562.0 | 557.9 | 554.0 | 548.6 | 542.1 | 534.9 | 531.4 | 528.5 | 521.4 | 513.7 | 509.3 |
| 7.5° | 580.8 | 575.0 | 567.6 | 557.3 | 547.9 | 536.7 | 529.6 | 523.3 | 513.0 | 502.1 | 495.4 |
| 10° | 592.3 | 584.4 | 574.9 | 562.3 | 550.8 | 537.2 | 527.7 | 518.2 | 506.0 | 493.0 | 484.9 |
| 12.5° | 602.2 | 591.6 | 582.2 | 566.1 | 552.4 | 535.4 | 524.1 | 510.7 | 497.9 | 482.5 | 474.6 |
| 15° | 625.7 | 606.1 | 588.3 | 570.0 | 553.2 | 529.5 | 516.9 | 498.9 | 482.1 | 463.1 | 454.0 |
| 17.5° | 643.9 | 621.8 | 593.8 | 570.6 | 551.0 | 524.7 | 506.3 | 484.7 | 464.8 | 443.1 | 430.7 |
| 20° | 654.2 | 628.9 | 598.8 | 571.2 | 547.8 | 517.7 | 497.7 | 475.6 | 452.4 | 427.8 | 414.5 |
| 22.5° | 660.4 | 633.8 | 604.0 | 568.8 | 541.3 | 512.1 | 486.9 | 462.6 | 439.1 | 412.6 | 398.6 |
| 25° | 662.4 | 638.1 | 606.5 | 566.8 | 533.2 | 500.2 | 469.8 | 446.2 | 417.7 | 393.0 | 372.6 |
| 27.5° | 652.7 | 635.3 | 604.9 | 562.9 | 523.8 | 485.2 | 451.3 | 424.7 | 394.6 | 367.7 | 347.1 |
| 30° | 640.9 | 630.8 | 601.2 | 559.1 | 516.3 | 474.8 | 437.6 | 407.3 | 377.4 | 350.3 | 329.1 |
| 32.5° | 622.6 | 620.5 | 594.4 | 553.6 | 508.4 | 461.7 | 423.1 | 392.6 | 359.4 | 332.7 | 312.6 |
| 35° | 586.7 | 596.4 | 580.0 | 541.3 | 493.5 | 443.0 | 401.3 | 366.4 | 332.0 | 306.5 | 287.7 |
| 37.5° | 538.4 | 562.6 | 558.3 | 523.3 | 473.2 | 422.7 | 376.6 | 340.2 | 307.4 | 281.6 | 263.1 |
| 40° | 505.2 | 536.0 | 540.5 | 509.4 | 459.1 | 407.0 | 358.1 | 321.9 | 289.9 | 266.4 | 247.7 |
| 42.5° | 469.6 | 505.5 | 517.7 | 492.9 | 443.4 | 390.4 | 341.6 | 304.1 | 272.3 | 249.5 | 233.0 |
| 45° | 409.8 | 457.4 | 479.5 | 465.3 | 417.5 | 363.2 | 313.0 | 274.9 | 246.1 | 224.6 | 211.9 |
| 47.5° | 353.9 | 405.9 | 435.6 | 430.6 | 388.6 | 334.8 | 285.2 | 248.6 | 220.6 | 203.5 | 192.1 |
| 50° | 314.4 | 367.8 | 403.7 | 405.4 | 367.8 | 314.6 | 264.7 | 230.3 | 204.6 | 188.6 | 179.2 |
| 52.5° | 280.0 | 331.1 | 370.1 | 378.8 | 344.6 | 293.6 | 246.5 | 212.1 | 189.5 | 174.8 | 166.5 |
| 55° | 235.1 | 278.3 | 321.6 | 337.5 | 310.1 | 261.5 | 217.9 | 187.8 | 166.5 | 156.4 | 149.1 |
| 57.5° | 195.6 | 231.5 | 271.5 | 289.0 | 272.2 | 230.5 | 189.7 | 163.5 | 146.2 | 137.3 | 131.7 |
| 60° | 174.6 | 203.0 | 238.6 | 259.5 | 244.9 | 207.9 | 172.2 | 147.2 | 133.0 | 125.2 | 119.9 |
| 62.5° | 155.2 | 180.3 | 210.4 | 229.5 | 221.6 | 186.6 | 154.7 | 132.7 | 120.5 | 113.1 | 109.2 |
| 65° | 128.0 | 147.8 | 171.2 | 188.8 | 183.5 | 157.0 | 130.8 | 112.0 | 102.3 | 96.4 | 93.4 |
| 67.5° | 105.4 | 119.8 | 135.9 | 151.3 | 147.1 | 128.3 | 107.4 | 92.6 | 85.4 | 80.3 | 78.5 |
| 70° | 91.1 | 102.1 | 116.5 | 128.9 | 125.4 | 110.0 | 93.4 | 80.8 | 74.5 | 70.3 | 68.5 |
| 72.5° | 77.6 | 86.5 | 97.6 | 107.6 | 105.3 | 92.5 | 78.6 | 69.2 | 64.3 | 60.4 | 58.9 |
| 75° | 58.6 | 65.5 | 72.1 | 78.8 | 78.2 | 68.3 | 60.2 | 52.9 | 49.0 | 46.0 | 45.4 |
| 77.5° | 43.2 | 47.1 | 51.6 | 55.6 | 54.5 | 48.8 | 42.4 | 38.3 | 35.5 | 33.4 | 33.1 |
| 80° | 33.0 | 35.2 | 38.5 | 41.3 | 39.9 | 37.5 | 32.4 | 29.3 | 27.4 | 25.3 | 24.5 |
| 82.5° | 24.0 | 26.1 | 28.1 | 29.7 | 28.5 | 26.3 | 23.2 | 21.1 | 19.9 | 18.5 | 18.2 |
| 85° | 12.6 | 13.7 | 14.6 | 15.0 | 14.6 | 13.2 | 11.8 | 11.0 | 9.9 | 9.3 | 9.1 |
| 87.5° | 9.5 | 8.6 | 7.7 | 7.3 | 6.3 | 5.9 | 4.7 | 3.7 | 4.1 | 4.4 | 4.5 |
| 90° | 22.7 | 18.4 | 13.9 | 10.5 | 8.1 | 5.7 | 3.3 | 0.9 | 3.3 | 5.7 | 8.1 |
| 92.5° | 26.7 | 25.6 | 24.5 | 23.2 | 21.4 | 19.6 | 17.8 | 16.1 | 17.8 | 19.6 | 21.4 |
| 95° | 57.0 | 56.6 | 56.2 | 55.0 | 53.0 | 51.0 | 49.0 | 47.0 | 49.0 | 51.0 | 53.0 |
| 97.5° | 95.7 | 94.9 | 94.2 | 92.8 | 91.1 | 89.3 | 87.6 | 85.8 | 87.6 | 89.3 | 91.1 |
| 100° | 123.4 | 122.8 | 122.3 | 121.1 | 119.5 | 117.9 | 116.3 | 114.7 | 116.3 | 117.9 | 119.5 |
| 102.5° | 152.8 | 151.9 | 151.2 | 150.2 | 148.9 | 147.6 | 146.3 | 145.1 | 146.3 | 147.6 | 148.9 |
| 105° | 197.9 | 197.5 | 197.1 | 196.6 | 196.0 | 195.4 | 194.7 | 194.2 | 194.7 | 195.4 | 196.0 |
| 107.5° | 247.6 | 247.6 | 247.6 | 247.2 | 246.3 | 245.4 | 244.6 | 243.7 | 244.6 | 245.4 | 246.3 |
| 110° | 280.9 | 280.9 | 280.9 | 280.3 | 279.1 | 277.9 | 276.7 | 275.4 | 276.7 | 277.9 | 279.1 |



TEST NUMBER: P331478-940

CATALOG NUMBER: S122DIW-S290D970U940-4F0-1E-UDD-A1

CANDELA DISTRIBUTION (continued):

| | 55° | 60° | 65° | 70° | 75° | 80° | 85° | 90° | 95° | 100° | 105° |
|--------|--------|--------|--------|--------|--------|--------|--------|--------|--------|--------|--------|
| 112.5° | 315.1 | 315.3 | 315.5 | 315.0 | 313.8 | 312.5 | 311.4 | 310.1 | 311.4 | 312.5 | 313.8 |
| 115° | 365.7 | 366.0 | 366.5 | 366.0 | 364.9 | 363.6 | 362.5 | 361.2 | 362.5 | 363.6 | 364.9 |
| 117.5° | 416.6 | 417.8 | 418.8 | 418.7 | 417.1 | 415.4 | 413.8 | 412.2 | 413.8 | 415.4 | 417.1 |
| 120° | 449.4 | 451.0 | 452.6 | 452.6 | 451.0 | 449.4 | 447.8 | 446.2 | 447.8 | 449.4 | 451.0 |
| 122.5° | 483.1 | 484.2 | 485.4 | 484.9 | 483.0 | 481.1 | 479.2 | 477.2 | 479.2 | 481.1 | 483.0 |
| 125° | 532.3 | 532.9 | 533.5 | 532.9 | 531.1 | 529.2 | 527.4 | 525.7 | 527.4 | 529.2 | 531.1 |
| 127.5° | 581.3 | 582.0 | 582.7 | 581.9 | 579.7 | 577.4 | 575.1 | 572.8 | 575.1 | 577.4 | 579.7 |
| 130° | 613.1 | 613.6 | 613.9 | 612.9 | 610.3 | 607.6 | 605.0 | 602.4 | 605.0 | 607.6 | 610.3 |
| 132.5° | 645.4 | 645.3 | 645.2 | 644.2 | 642.0 | 639.9 | 637.8 | 635.6 | 637.8 | 639.9 | 642.0 |
| 135° | 691.0 | 690.6 | 690.2 | 688.9 | 686.7 | 684.5 | 682.3 | 680.1 | 682.3 | 684.5 | 686.7 |
| 137.5° | 736.3 | 735.8 | 735.3 | 734.1 | 732.3 | 730.5 | 728.7 | 726.8 | 728.7 | 730.5 | 732.3 |
| 140° | 765.7 | 764.7 | 763.7 | 762.2 | 760.5 | 758.7 | 756.9 | 755.0 | 756.9 | 758.7 | 760.5 |
| 142.5° | 793.8 | 793.1 | 792.5 | 791.2 | 789.3 | 787.6 | 785.8 | 784.0 | 785.8 | 787.6 | 789.3 |
| 145° | 834.8 | 833.7 | 832.4 | 831.2 | 829.7 | 828.3 | 826.9 | 825.5 | 826.9 | 828.3 | 829.7 |
| 147.5° | 872.1 | 871.3 | 870.5 | 869.2 | 867.5 | 865.9 | 864.2 | 862.6 | 864.2 | 865.9 | 867.5 |
| 150° | 895.3 | 894.5 | 893.7 | 892.6 | 891.4 | 890.2 | 889.0 | 887.8 | 889.0 | 890.2 | 891.4 |
| 152.5° | 918.0 | 917.1 | 916.1 | 915.1 | 913.8 | 912.7 | 911.4 | 910.3 | 911.4 | 912.7 | 913.8 |
| 155° | 948.1 | 947.4 | 946.8 | 946.2 | 945.7 | 945.0 | 944.4 | 943.8 | 944.4 | 945.0 | 945.7 |
| 157.5° | 975.3 | 974.9 | 974.6 | 974.1 | 973.7 | 973.3 | 972.9 | 972.5 | 972.9 | 973.3 | 973.7 |
| 160° | 992.2 | 992.0 | 991.8 | 991.5 | 991.0 | 990.7 | 990.2 | 989.9 | 990.2 | 990.7 | 991.0 |
| 162.5° | 1006.7 | 1006.5 | 1006.2 | 1006.1 | 1006.0 | 1005.9 | 1005.8 | 1005.8 | 1005.8 | 1005.9 | 1006.0 |
| 165° | 1026.0 | 1026.0 | 1026.0 | 1026.1 | 1026.3 | 1026.5 | 1026.7 | 1026.9 | 1026.7 | 1026.5 | 1026.3 |
| 167.5° | 1041.8 | 1041.9 | 1041.9 | 1042.2 | 1042.8 | 1043.4 | 1044.0 | 1044.6 | 1044.0 | 1043.4 | 1042.8 |
| 170° | 1050.8 | 1051.0 | 1051.2 | 1051.6 | 1052.2 | 1052.8 | 1053.4 | 1054.0 | 1053.4 | 1052.8 | 1052.2 |
| 172.5° | 1057.3 | 1057.5 | 1057.7 | 1058.1 | 1058.7 | 1059.3 | 1059.9 | 1060.5 | 1059.9 | 1059.3 | 1058.7 |
| 175° | 1064.7 | 1065.1 | 1065.5 | 1066.0 | 1066.7 | 1067.3 | 1067.8 | 1068.4 | 1067.8 | 1067.3 | 1066.7 |
| 177.5° | 1068.7 | 1069.1 | 1069.3 | 1069.8 | 1070.2 | 1070.8 | 1071.2 | 1071.7 | 1071.2 | 1070.8 | 1070.2 |
| 180° | 1070.2 | 1070.2 | 1070.2 | 1070.2 | 1070.2 | 1070.2 | 1070.2 | 1070.2 | 1070.2 | 1070.2 | 1070.2 |



TEST NUMBER: P331478-940

CATALOG NUMBER: S122DIW-S290D970U940-4F0-1E-UDD-A1

CANDELA DISTRIBUTION (continued):

| | 110° | 115° | 120° | 125° | 130° | 135° | 140° | 145° | 150° | 155° | 160° |
|--------|-------|-------|-------|-------|-------|-------|-------|-------|-------|-------|-------|
| 0° | 527.1 | 527.1 | 527.1 | 527.1 | 527.1 | 527.1 | 527.1 | 527.1 | 527.1 | 527.1 | 527.1 |
| 2.5° | 520.1 | 519.2 | 515.8 | 514.0 | 511.0 | 508.3 | 506.5 | 507.3 | 507.9 | 507.7 | 507.1 |
| 5° | 505.2 | 501.3 | 495.4 | 490.4 | 486.8 | 480.1 | 477.2 | 475.8 | 474.6 | 473.2 | 471.8 |
| 7.5° | 487.4 | 481.3 | 473.0 | 465.7 | 459.0 | 450.6 | 445.9 | 443.1 | 440.1 | 436.9 | 434.1 |
| 10° | 474.8 | 466.3 | 457.4 | 447.3 | 439.2 | 431.7 | 425.0 | 420.5 | 416.4 | 412.6 | 409.8 |
| 12.5° | 461.5 | 451.7 | 440.7 | 426.9 | 417.9 | 407.2 | 406.2 | 398.3 | 392.0 | 389.6 | 386.3 |
| 15° | 440.4 | 426.6 | 412.6 | 396.2 | 389.1 | 379.4 | 373.4 | 367.2 | 361.8 | 357.9 | 357.0 |
| 17.5° | 416.3 | 398.5 | 384.6 | 372.8 | 361.2 | 351.2 | 345.6 | 340.8 | 336.3 | 331.2 | 330.5 |
| 20° | 398.1 | 382.6 | 367.5 | 357.1 | 345.2 | 335.0 | 328.1 | 323.3 | 319.4 | 316.4 | 313.8 |
| 22.5° | 380.7 | 363.8 | 349.9 | 338.7 | 326.9 | 318.7 | 313.3 | 308.5 | 305.3 | 302.0 | 299.5 |
| 25° | 352.8 | 339.7 | 324.5 | 311.7 | 302.0 | 296.8 | 292.3 | 288.3 | 286.2 | 284.0 | 281.2 |
| 27.5° | 328.5 | 313.9 | 299.7 | 289.8 | 281.2 | 276.6 | 273.4 | 270.6 | 268.8 | 267.4 | 265.8 |
| 30° | 311.4 | 296.6 | 285.4 | 275.7 | 268.6 | 263.9 | 261.9 | 260.3 | 258.1 | 257.3 | 256.5 |
| 32.5° | 294.8 | 281.5 | 272.0 | 263.5 | 256.8 | 253.7 | 251.9 | 250.4 | 248.7 | 247.9 | 246.2 |
| 35° | 271.4 | 260.3 | 251.0 | 246.3 | 240.9 | 238.2 | 236.8 | 234.8 | 233.2 | 232.4 | 232.1 |
| 37.5° | 249.4 | 239.8 | 233.6 | 227.7 | 225.3 | 223.7 | 221.8 | 220.4 | 219.9 | 219.8 | 219.5 |
| 40° | 235.1 | 227.3 | 221.8 | 217.0 | 216.0 | 213.5 | 211.9 | 210.7 | 210.7 | 210.9 | 210.7 |
| 42.5° | 222.2 | 215.1 | 210.3 | 206.1 | 204.9 | 203.5 | 201.8 | 201.8 | 202.1 | 202.8 | 202.1 |
| 45° | 202.6 | 197.5 | 194.0 | 192.1 | 189.8 | 188.4 | 188.2 | 188.8 | 189.0 | 189.2 | 189.8 |
| 47.5° | 184.5 | 181.1 | 178.0 | 175.8 | 174.8 | 174.6 | 174.3 | 175.4 | 176.4 | 176.7 | 177.6 |
| 50° | 173.8 | 170.0 | 167.3 | 165.9 | 165.1 | 164.7 | 165.1 | 166.3 | 167.1 | 168.1 | 168.7 |
| 52.5° | 161.8 | 159.1 | 157.3 | 156.1 | 155.9 | 156.1 | 156.1 | 157.6 | 158.8 | 159.3 | 159.5 |
| 55° | 145.3 | 143.2 | 142.9 | 141.0 | 141.8 | 141.6 | 142.6 | 143.4 | 144.6 | 145.9 | 146.1 |
| 57.5° | 128.7 | 127.1 | 126.0 | 126.2 | 126.4 | 127.3 | 128.1 | 129.6 | 130.8 | 132.2 | 132.2 |
| 60° | 117.7 | 116.9 | 116.3 | 116.3 | 116.6 | 117.9 | 118.9 | 120.3 | 121.1 | 122.0 | 122.5 |
| 62.5° | 107.6 | 106.8 | 106.2 | 106.6 | 107.6 | 108.3 | 109.5 | 110.3 | 111.1 | 111.9 | 112.2 |
| 65° | 91.8 | 91.4 | 91.9 | 92.4 | 92.6 | 93.5 | 95.0 | 95.6 | 96.4 | 96.8 | 98.3 |
| 67.5° | 77.1 | 77.2 | 77.1 | 77.7 | 78.9 | 79.1 | 80.4 | 81.9 | 82.0 | 82.8 | 83.7 |
| 70° | 67.2 | 67.7 | 68.0 | 68.5 | 69.5 | 69.9 | 70.9 | 71.5 | 72.3 | 72.9 | 73.6 |
| 72.5° | 58.1 | 58.2 | 58.7 | 58.6 | 59.5 | 60.3 | 61.2 | 61.8 | 62.6 | 63.4 | 63.9 |
| 75° | 44.8 | 44.8 | 45.2 | 45.4 | 46.4 | 47.4 | 47.2 | 47.6 | 48.4 | 49.2 | 49.7 |
| 77.5° | 32.7 | 32.3 | 32.7 | 32.9 | 33.3 | 34.1 | 34.2 | 34.8 | 35.8 | 35.5 | 35.9 |
| 80° | 24.9 | 24.3 | 24.9 | 25.1 | 25.1 | 26.1 | 26.1 | 26.6 | 27.1 | 26.6 | 27.1 |
| 82.5° | 17.7 | 17.5 | 17.9 | 18.0 | 18.3 | 18.4 | 18.6 | 18.7 | 19.4 | 19.1 | 19.4 |
| 85° | 8.9 | 8.7 | 8.9 | 8.7 | 8.9 | 9.1 | 9.1 | 8.9 | 8.9 | 9.3 | 8.7 |
| 87.5° | 4.9 | 5.4 | 6.1 | 7.0 | 7.7 | 8.5 | 8.2 | 8.1 | 8.0 | 7.6 | 7.6 |
| 90° | 10.5 | 13.9 | 18.4 | 22.7 | 27.2 | 31.6 | 31.2 | 30.8 | 30.4 | 30.0 | 29.9 |
| 92.5° | 23.2 | 24.5 | 25.6 | 26.7 | 27.6 | 28.7 | 28.8 | 28.9 | 29.0 | 29.1 | 29.1 |
| 95° | 55.0 | 56.2 | 56.6 | 57.0 | 57.4 | 57.8 | 57.8 | 57.8 | 57.8 | 57.8 | 57.6 |
| 97.5° | 92.8 | 94.2 | 94.9 | 95.7 | 96.4 | 97.2 | 97.2 | 97.2 | 97.2 | 97.2 | 97.2 |
| 100° | 121.1 | 122.3 | 122.8 | 123.4 | 124.0 | 124.7 | 124.7 | 124.7 | 124.7 | 124.7 | 124.6 |
| 102.5° | 150.2 | 151.2 | 151.9 | 152.8 | 153.5 | 154.3 | 154.4 | 154.6 | 154.7 | 154.9 | 154.9 |
| 105° | 196.6 | 197.1 | 197.5 | 197.9 | 198.3 | 198.7 | 199.1 | 199.5 | 199.9 | 200.3 | 200.5 |
| 107.5° | 247.2 | 247.6 | 247.6 | 247.6 | 247.6 | 247.6 | 247.8 | 248.0 | 248.2 | 248.3 | 247.9 |
| 110° | 280.3 | 280.9 | 280.9 | 280.9 | 280.9 | 280.9 | 280.9 | 280.9 | 280.9 | 280.9 | 280.6 |



TEST NUMBER: P331478-940

CATALOG NUMBER: S122DIW-S290D970U940-4F0-1E-UDD-A1

CANDELA DISTRIBUTION (continued):

| | 110° | 115° | 120° | 125° | 130° | 135° | 140° | 145° | 150° | 155° | 160° |
|--------|--------|--------|--------|--------|--------|--------|--------|--------|--------|--------|--------|
| 112.5° | 315.0 | 315.5 | 315.3 | 315.1 | 315.0 | 314.9 | 314.3 | 313.9 | 313.4 | 312.9 | 312.5 |
| 115° | 366.0 | 366.5 | 366.0 | 365.7 | 365.2 | 364.9 | 364.7 | 364.4 | 364.3 | 364.1 | 363.6 |
| 117.5° | 418.7 | 418.8 | 417.8 | 416.6 | 415.5 | 414.4 | 413.9 | 413.4 | 413.0 | 412.4 | 411.9 |
| 120° | 452.6 | 452.6 | 451.0 | 449.4 | 447.8 | 446.2 | 446.2 | 446.2 | 446.2 | 446.2 | 445.9 |
| 122.5° | 484.9 | 485.4 | 484.2 | 483.1 | 482.0 | 480.8 | 480.4 | 479.9 | 479.4 | 478.9 | 478.5 |
| 125° | 532.9 | 533.5 | 532.9 | 532.3 | 531.6 | 531.1 | 530.5 | 529.9 | 529.2 | 528.7 | 528.2 |
| 127.5° | 581.9 | 582.7 | 582.0 | 581.3 | 580.6 | 579.9 | 579.1 | 578.4 | 577.7 | 576.9 | 576.2 |
| 130° | 612.9 | 613.9 | 613.6 | 613.1 | 612.8 | 612.3 | 612.0 | 611.5 | 611.2 | 610.7 | 610.1 |
| 132.5° | 644.2 | 645.2 | 645.3 | 645.4 | 645.5 | 645.6 | 644.7 | 643.8 | 642.9 | 642.0 | 641.3 |
| 135° | 688.9 | 690.2 | 690.6 | 691.0 | 691.4 | 691.8 | 691.6 | 691.4 | 691.3 | 691.0 | 690.6 |
| 137.5° | 734.1 | 735.3 | 735.8 | 736.3 | 736.8 | 737.4 | 737.2 | 737.0 | 736.9 | 736.7 | 736.2 |
| 140° | 762.2 | 763.7 | 764.7 | 765.7 | 766.7 | 767.7 | 767.7 | 767.7 | 767.7 | 767.7 | 767.3 |
| 142.5° | 791.2 | 792.5 | 793.1 | 793.8 | 794.5 | 795.1 | 795.3 | 795.5 | 795.7 | 795.8 | 795.5 |
| 145° | 831.2 | 832.4 | 833.7 | 834.8 | 836.1 | 837.2 | 837.4 | 837.7 | 837.9 | 838.0 | 837.8 |
| 147.5° | 869.2 | 870.5 | 871.3 | 872.1 | 872.9 | 873.7 | 874.1 | 874.6 | 875.0 | 875.5 | 875.3 |
| 150° | 892.6 | 893.7 | 894.5 | 895.3 | 896.1 | 896.9 | 897.4 | 898.0 | 898.7 | 899.3 | 899.3 |
| 152.5° | 915.1 | 916.1 | 917.1 | 918.0 | 919.0 | 920.0 | 920.7 | 921.5 | 922.3 | 923.0 | 923.0 |
| 155° | 946.2 | 946.8 | 947.4 | 948.1 | 948.6 | 949.2 | 950.2 | 951.3 | 952.3 | 953.2 | 953.4 |
| 157.5° | 974.1 | 974.6 | 974.9 | 975.3 | 975.6 | 976.0 | 977.3 | 978.7 | 980.1 | 981.4 | 981.6 |
| 160° | 991.5 | 991.8 | 992.0 | 992.2 | 992.4 | 992.6 | 993.8 | 995.0 | 996.2 | 997.4 | 997.6 |
| 162.5° | 1006.1 | 1006.2 | 1006.5 | 1006.7 | 1006.8 | 1007.0 | 1008.4 | 1009.8 | 1011.1 | 1012.5 | 1012.7 |
| 165° | 1026.1 | 1026.0 | 1026.0 | 1026.0 | 1026.0 | 1026.0 | 1027.4 | 1028.9 | 1030.2 | 1031.6 | 1031.8 |
| 167.5° | 1042.2 | 1041.9 | 1041.9 | 1041.8 | 1041.8 | 1041.7 | 1043.1 | 1044.6 | 1046.0 | 1047.3 | 1047.5 |
| 170° | 1051.6 | 1051.2 | 1051.0 | 1050.8 | 1050.6 | 1050.4 | 1051.8 | 1053.2 | 1054.6 | 1056.1 | 1056.1 |
| 172.5° | 1058.1 | 1057.7 | 1057.5 | 1057.3 | 1057.1 | 1056.9 | 1058.3 | 1059.7 | 1061.1 | 1062.5 | 1062.7 |
| 175° | 1066.0 | 1065.5 | 1065.1 | 1064.7 | 1064.3 | 1063.9 | 1065.3 | 1066.8 | 1068.2 | 1069.5 | 1069.7 |
| 177.5° | 1069.8 | 1069.3 | 1069.1 | 1068.7 | 1068.4 | 1068.1 | 1069.1 | 1070.1 | 1070.9 | 1071.9 | 1071.9 |
| 180° | 1070.2 | 1070.2 | 1070.2 | 1070.2 | 1070.2 | 1070.2 | 1070.2 | 1070.2 | 1070.2 | 1070.2 | 1070.2 |



TEST NUMBER: P331478-940

CATALOG NUMBER: S122DIW-S290D970U940-4F0-1E-UDD-A1

CANDELA DISTRIBUTION (continued):

| | 165° | 170° | 175° | 180° | 185° | 190° | 195° | 200° | 205° | 210° | 215° |
|--------|-------|-------|-------|-------|-------|-------|-------|-------|-------|-------|-------|
| 0° | 527.1 | 527.1 | 527.1 | 527.1 | 527.1 | 527.1 | 527.1 | 527.1 | 527.1 | 527.1 | 527.1 |
| 2.5° | 505.5 | 505.2 | 505.2 | 503.7 | 505.2 | 505.2 | 505.5 | 507.1 | 507.7 | 507.9 | 507.3 |
| 5° | 469.0 | 468.3 | 467.3 | 468.3 | 467.3 | 468.3 | 469.0 | 471.8 | 473.2 | 474.6 | 475.8 |
| 7.5° | 432.7 | 430.3 | 430.0 | 427.6 | 430.0 | 430.3 | 432.7 | 434.1 | 436.9 | 440.1 | 443.1 |
| 10° | 406.4 | 404.7 | 404.5 | 400.6 | 404.5 | 404.7 | 406.4 | 409.8 | 412.6 | 416.4 | 420.5 |
| 12.5° | 386.3 | 382.4 | 383.2 | 380.9 | 383.2 | 382.4 | 386.3 | 386.3 | 389.6 | 392.0 | 398.3 |
| 15° | 351.4 | 351.4 | 350.6 | 347.2 | 350.6 | 351.4 | 351.4 | 357.0 | 357.9 | 361.8 | 367.2 |
| 17.5° | 326.5 | 326.0 | 324.1 | 325.1 | 324.1 | 326.0 | 326.5 | 330.5 | 331.2 | 336.3 | 340.8 |
| 20° | 311.6 | 310.3 | 307.9 | 307.9 | 307.9 | 310.3 | 311.6 | 313.8 | 316.4 | 319.4 | 323.3 |
| 22.5° | 297.5 | 297.4 | 294.8 | 295.6 | 294.8 | 297.4 | 297.5 | 299.5 | 302.0 | 305.3 | 308.5 |
| 25° | 281.0 | 279.4 | 278.1 | 278.7 | 278.1 | 279.4 | 281.0 | 281.2 | 284.0 | 286.2 | 288.3 |
| 27.5° | 265.3 | 264.4 | 264.3 | 262.7 | 264.3 | 264.4 | 265.3 | 265.8 | 267.4 | 268.8 | 270.6 |
| 30° | 256.3 | 254.2 | 254.6 | 253.6 | 254.6 | 254.2 | 256.3 | 256.5 | 257.3 | 258.1 | 260.3 |
| 32.5° | 245.8 | 245.1 | 244.8 | 243.9 | 244.8 | 245.1 | 245.8 | 246.2 | 247.9 | 248.7 | 250.4 |
| 35° | 231.8 | 231.9 | 231.0 | 231.3 | 231.0 | 231.9 | 231.8 | 232.1 | 232.4 | 233.2 | 234.8 |
| 37.5° | 219.4 | 220.0 | 219.5 | 219.6 | 219.5 | 220.0 | 219.4 | 219.5 | 219.8 | 219.9 | 220.4 |
| 40° | 211.2 | 211.2 | 211.2 | 211.9 | 211.2 | 211.2 | 211.2 | 210.7 | 210.9 | 210.7 | 210.7 |
| 42.5° | 203.5 | 203.1 | 202.9 | 202.8 | 202.9 | 203.1 | 203.5 | 202.1 | 202.8 | 202.1 | 201.8 |
| 45° | 190.2 | 190.8 | 191.0 | 190.0 | 191.0 | 190.8 | 190.2 | 189.8 | 189.2 | 189.0 | 188.8 |
| 47.5° | 178.2 | 178.3 | 178.2 | 179.1 | 178.2 | 178.3 | 178.2 | 177.6 | 176.7 | 176.4 | 175.4 |
| 50° | 169.8 | 169.3 | 169.8 | 169.3 | 169.8 | 169.3 | 169.8 | 168.7 | 168.1 | 167.1 | 166.3 |
| 52.5° | 160.9 | 161.0 | 160.7 | 160.6 | 160.7 | 161.0 | 160.9 | 159.5 | 159.3 | 158.8 | 157.6 |
| 55° | 146.9 | 147.2 | 147.0 | 147.0 | 147.0 | 147.2 | 146.9 | 146.1 | 145.9 | 144.6 | 143.4 |
| 57.5° | 132.4 | 132.8 | 133.0 | 132.2 | 133.0 | 132.8 | 132.4 | 132.2 | 132.2 | 130.8 | 129.6 |
| 60° | 122.3 | 123.3 | 123.1 | 122.8 | 123.1 | 123.3 | 122.3 | 122.5 | 122.0 | 121.1 | 120.3 |
| 62.5° | 113.1 | 113.5 | 113.4 | 113.3 | 113.4 | 113.5 | 113.1 | 112.2 | 111.9 | 111.1 | 110.3 |
| 65° | 98.9 | 99.2 | 98.6 | 99.2 | 98.6 | 99.2 | 98.9 | 98.3 | 96.8 | 96.4 | 95.6 |
| 67.5° | 83.5 | 83.6 | 84.1 | 84.4 | 84.1 | 83.6 | 83.5 | 83.7 | 82.8 | 82.0 | 81.9 |
| 70° | 73.9 | 73.7 | 74.4 | 75.0 | 74.4 | 73.7 | 73.9 | 73.6 | 72.9 | 72.3 | 71.5 |
| 72.5° | 63.8 | 64.3 | 64.1 | 64.6 | 64.1 | 64.3 | 63.8 | 63.9 | 63.4 | 62.6 | 61.8 |
| 75° | 49.2 | 49.8 | 49.7 | 50.2 | 49.7 | 49.8 | 49.2 | 49.7 | 49.2 | 48.4 | 47.6 |
| 77.5° | 35.6 | 35.7 | 35.6 | 35.9 | 35.6 | 35.7 | 35.6 | 35.9 | 35.5 | 35.8 | 34.8 |
| 80° | 27.1 | 26.8 | 26.3 | 27.1 | 26.3 | 26.8 | 27.1 | 27.1 | 26.6 | 27.1 | 26.6 |
| 82.5° | 18.9 | 19.1 | 18.7 | 18.7 | 18.7 | 19.1 | 18.9 | 19.4 | 19.1 | 19.4 | 18.7 |
| 85° | 8.7 | 8.5 | 8.1 | 8.1 | 8.1 | 8.5 | 8.7 | 8.7 | 9.3 | 8.9 | 8.9 |
| 87.5° | 7.7 | 7.5 | 7.6 | 7.4 | 7.6 | 7.5 | 7.7 | 7.6 | 7.6 | 8.0 | 8.1 |
| 90° | 30.1 | 30.3 | 30.5 | 30.7 | 30.5 | 30.3 | 30.1 | 29.9 | 30.0 | 30.4 | 30.8 |
| 92.5° | 29.2 | 29.2 | 29.2 | 29.2 | 29.2 | 29.2 | 29.2 | 29.1 | 29.1 | 29.0 | 28.9 |
| 95° | 57.2 | 56.8 | 56.4 | 56.0 | 56.4 | 56.8 | 57.2 | 57.6 | 57.8 | 57.8 | 57.8 |
| 97.5° | 97.1 | 97.1 | 97.0 | 97.0 | 97.0 | 97.1 | 97.1 | 97.2 | 97.2 | 97.2 | 97.2 |
| 100° | 124.3 | 124.1 | 123.9 | 123.8 | 123.9 | 124.1 | 124.3 | 124.6 | 124.7 | 124.7 | 124.7 |
| 102.5° | 154.7 | 154.4 | 154.3 | 154.1 | 154.3 | 154.4 | 154.7 | 154.9 | 154.9 | 154.7 | 154.6 |
| 105° | 200.5 | 200.5 | 200.5 | 200.5 | 200.5 | 200.5 | 200.5 | 200.5 | 200.3 | 199.9 | 199.5 |
| 107.5° | 247.0 | 246.0 | 245.1 | 244.2 | 245.1 | 246.0 | 247.0 | 247.9 | 248.3 | 248.2 | 248.0 |
| 110° | 280.0 | 279.4 | 278.7 | 278.2 | 278.7 | 279.4 | 280.0 | 280.6 | 280.9 | 280.9 | 280.9 |



TEST NUMBER: P331478-940

CATALOG NUMBER: S122DIW-S290D970U940-4F0-1E-UDD-A1

CANDELA DISTRIBUTION (continued):

| | 165° | 170° | 175° | 180° | 185° | 190° | 195° | 200° | 205° | 210° | 215° |
|--------|--------|--------|--------|--------|--------|--------|--------|--------|--------|--------|--------|
| 112.5° | 312.0 | 311.6 | 311.1 | 310.7 | 311.1 | 311.6 | 312.0 | 312.5 | 312.9 | 313.4 | 313.9 |
| 115° | 363.1 | 362.5 | 361.9 | 361.2 | 361.9 | 362.5 | 363.1 | 363.6 | 364.1 | 364.3 | 364.4 |
| 117.5° | 411.3 | 410.7 | 410.1 | 409.5 | 410.1 | 410.7 | 411.3 | 411.9 | 412.4 | 413.0 | 413.4 |
| 120° | 445.2 | 444.7 | 444.1 | 443.4 | 444.1 | 444.7 | 445.2 | 445.9 | 446.2 | 446.2 | 446.2 |
| 122.5° | 478.0 | 477.6 | 477.2 | 476.7 | 477.2 | 477.6 | 478.0 | 478.5 | 478.9 | 479.4 | 479.9 |
| 125° | 528.1 | 527.9 | 527.6 | 527.4 | 527.6 | 527.9 | 528.1 | 528.2 | 528.7 | 529.2 | 529.9 |
| 127.5° | 575.6 | 575.0 | 574.4 | 573.7 | 574.4 | 575.0 | 575.6 | 576.2 | 576.9 | 577.7 | 578.4 |
| 130° | 609.3 | 608.5 | 607.7 | 606.9 | 607.7 | 608.5 | 609.3 | 610.1 | 610.7 | 611.2 | 611.5 |
| 132.5° | 640.7 | 640.0 | 639.4 | 638.7 | 639.4 | 640.0 | 640.7 | 641.3 | 642.0 | 642.9 | 643.8 |
| 135° | 690.0 | 689.4 | 688.8 | 688.2 | 688.8 | 689.4 | 690.0 | 690.6 | 691.0 | 691.3 | 691.4 |
| 137.5° | 735.4 | 734.6 | 733.8 | 733.0 | 733.8 | 734.6 | 735.4 | 736.2 | 736.7 | 736.9 | 737.0 |
| 140° | 766.5 | 765.7 | 764.9 | 764.1 | 764.9 | 765.7 | 766.5 | 767.3 | 767.7 | 767.7 | 767.7 |
| 142.5° | 794.7 | 793.9 | 793.1 | 792.3 | 793.1 | 793.9 | 794.7 | 795.5 | 795.8 | 795.7 | 795.5 |
| 145° | 837.0 | 836.2 | 835.4 | 834.6 | 835.4 | 836.2 | 837.0 | 837.8 | 838.0 | 837.9 | 837.7 |
| 147.5° | 874.6 | 873.8 | 873.1 | 872.3 | 873.1 | 873.8 | 874.6 | 875.3 | 875.5 | 875.0 | 874.6 |
| 150° | 898.7 | 898.0 | 897.4 | 896.9 | 897.4 | 898.0 | 898.7 | 899.3 | 899.3 | 898.7 | 898.0 |
| 152.5° | 922.3 | 921.5 | 920.7 | 920.0 | 920.7 | 921.5 | 922.3 | 923.0 | 923.0 | 922.3 | 921.5 |
| 155° | 952.9 | 952.3 | 951.6 | 951.0 | 951.6 | 952.3 | 952.9 | 953.4 | 953.2 | 952.3 | 951.3 |
| 157.5° | 980.7 | 979.7 | 978.7 | 977.8 | 978.7 | 979.7 | 980.7 | 981.6 | 981.4 | 980.1 | 978.7 |
| 160° | 996.8 | 996.0 | 995.2 | 994.4 | 995.2 | 996.0 | 996.8 | 997.6 | 997.4 | 996.2 | 995.0 |
| 162.5° | 1011.7 | 1010.8 | 1009.8 | 1008.9 | 1009.8 | 1010.8 | 1011.7 | 1012.7 | 1012.5 | 1011.1 | 1009.8 |
| 165° | 1030.8 | 1029.8 | 1028.9 | 1027.8 | 1028.9 | 1029.8 | 1030.8 | 1031.8 | 1031.6 | 1030.2 | 1028.9 |
| 167.5° | 1046.5 | 1045.4 | 1044.4 | 1043.4 | 1044.4 | 1045.4 | 1046.5 | 1047.5 | 1047.3 | 1046.0 | 1044.6 |
| 170° | 1054.9 | 1053.7 | 1052.5 | 1051.3 | 1052.5 | 1053.7 | 1054.9 | 1056.1 | 1056.1 | 1054.6 | 1053.2 |
| 172.5° | 1061.4 | 1060.2 | 1059.0 | 1057.8 | 1059.0 | 1060.2 | 1061.4 | 1062.7 | 1062.5 | 1061.1 | 1059.7 |
| 175° | 1068.4 | 1067.3 | 1066.0 | 1064.9 | 1066.0 | 1067.3 | 1068.4 | 1069.7 | 1069.5 | 1068.2 | 1066.8 |
| 177.5° | 1070.9 | 1070.1 | 1069.1 | 1068.1 | 1069.1 | 1070.1 | 1070.9 | 1071.9 | 1071.9 | 1070.9 | 1070.1 |
| 180° | 1070.2 | 1070.2 | 1070.2 | 1070.2 | 1070.2 | 1070.2 | 1070.2 | 1070.2 | 1070.2 | 1070.2 | 1070.2 |



TEST NUMBER: P331478-940

CATALOG NUMBER: S122DIW-S290D970U940-4F0-1E-UDD-A1

CANDELA DISTRIBUTION (continued):

| | 220° | 225° | 230° | 235° | 240° | 245° | 250° | 255° | 260° | 265° | 270° |
|--------|-------|-------|-------|-------|-------|-------|-------|-------|-------|-------|-------|
| 0° | 527.1 | 527.1 | 527.1 | 527.1 | 527.1 | 527.1 | 527.1 | 527.1 | 527.1 | 527.1 | 527.1 |
| 2.5° | 506.5 | 508.3 | 511.0 | 514.0 | 515.8 | 519.2 | 520.1 | 521.7 | 523.2 | 526.6 | 530.1 |
| 5° | 477.2 | 480.1 | 486.8 | 490.4 | 495.4 | 501.3 | 505.2 | 509.3 | 513.7 | 521.4 | 528.5 |
| 7.5° | 445.9 | 450.6 | 459.0 | 465.7 | 473.0 | 481.3 | 487.4 | 495.4 | 502.1 | 513.0 | 523.3 |
| 10° | 425.0 | 431.7 | 439.2 | 447.3 | 457.4 | 466.3 | 474.8 | 484.9 | 493.0 | 506.0 | 518.2 |
| 12.5° | 406.2 | 407.2 | 417.9 | 426.9 | 440.7 | 451.7 | 461.5 | 474.6 | 482.5 | 497.9 | 510.7 |
| 15° | 373.4 | 379.4 | 389.1 | 396.2 | 412.6 | 426.6 | 440.4 | 454.0 | 463.1 | 482.1 | 498.9 |
| 17.5° | 345.6 | 351.2 | 361.2 | 372.8 | 384.6 | 398.5 | 416.3 | 430.7 | 443.1 | 464.8 | 484.7 |
| 20° | 328.1 | 335.0 | 345.2 | 357.1 | 367.5 | 382.6 | 398.1 | 414.5 | 427.8 | 452.4 | 475.6 |
| 22.5° | 313.3 | 318.7 | 326.9 | 338.7 | 349.9 | 363.8 | 380.7 | 398.6 | 412.6 | 439.1 | 462.6 |
| 25° | 292.3 | 296.8 | 302.0 | 311.7 | 324.5 | 339.7 | 352.8 | 372.6 | 393.0 | 417.7 | 446.2 |
| 27.5° | 273.4 | 276.6 | 281.2 | 289.8 | 299.7 | 313.9 | 328.5 | 347.1 | 367.7 | 394.6 | 424.7 |
| 30° | 261.9 | 263.9 | 268.6 | 275.7 | 285.4 | 296.6 | 311.4 | 329.1 | 350.3 | 377.4 | 407.3 |
| 32.5° | 251.9 | 253.7 | 256.8 | 263.5 | 272.0 | 281.5 | 294.8 | 312.6 | 332.7 | 359.4 | 392.6 |
| 35° | 236.8 | 238.2 | 240.9 | 246.3 | 251.0 | 260.3 | 271.4 | 287.7 | 306.5 | 332.0 | 366.4 |
| 37.5° | 221.8 | 223.7 | 225.3 | 227.7 | 233.6 | 239.8 | 249.4 | 263.1 | 281.6 | 307.4 | 340.2 |
| 40° | 211.9 | 213.5 | 216.0 | 217.0 | 221.8 | 227.3 | 235.1 | 247.7 | 266.4 | 289.9 | 321.9 |
| 42.5° | 201.8 | 203.5 | 204.9 | 206.1 | 210.3 | 215.1 | 222.2 | 233.0 | 249.5 | 272.3 | 304.1 |
| 45° | 188.2 | 188.4 | 189.8 | 192.1 | 194.0 | 197.5 | 202.6 | 211.9 | 224.6 | 246.1 | 274.9 |
| 47.5° | 174.3 | 174.6 | 174.8 | 175.8 | 178.0 | 181.1 | 184.5 | 192.1 | 203.5 | 220.6 | 248.6 |
| 50° | 165.1 | 164.7 | 165.1 | 165.9 | 167.3 | 170.0 | 173.8 | 179.2 | 188.6 | 204.6 | 230.3 |
| 52.5° | 156.1 | 156.1 | 155.9 | 156.1 | 157.3 | 159.1 | 161.8 | 166.5 | 174.8 | 189.5 | 212.1 |
| 55° | 142.6 | 141.6 | 141.8 | 141.0 | 142.9 | 143.2 | 145.3 | 149.1 | 156.4 | 166.5 | 187.8 |
| 57.5° | 128.1 | 127.3 | 126.4 | 126.2 | 126.0 | 127.1 | 128.7 | 131.7 | 137.3 | 146.2 | 163.5 |
| 60° | 118.9 | 117.9 | 116.6 | 116.3 | 116.3 | 116.9 | 117.7 | 119.9 | 125.2 | 133.0 | 147.2 |
| 62.5° | 109.5 | 108.3 | 107.6 | 106.6 | 106.2 | 106.8 | 107.6 | 109.2 | 113.1 | 120.5 | 132.7 |
| 65° | 95.0 | 93.5 | 92.6 | 92.4 | 91.9 | 91.4 | 91.8 | 93.4 | 96.4 | 102.3 | 112.0 |
| 67.5° | 80.4 | 79.1 | 78.9 | 77.7 | 77.1 | 77.2 | 77.1 | 78.5 | 80.3 | 85.4 | 92.6 |
| 70° | 70.9 | 69.9 | 69.5 | 68.5 | 68.0 | 67.7 | 67.2 | 68.5 | 70.3 | 74.5 | 80.8 |
| 72.5° | 61.2 | 60.3 | 59.5 | 58.6 | 58.7 | 58.2 | 58.1 | 58.9 | 60.4 | 64.3 | 69.2 |
| 75° | 47.2 | 47.4 | 46.4 | 45.4 | 45.2 | 44.8 | 44.8 | 45.4 | 46.0 | 49.0 | 52.9 |
| 77.5° | 34.2 | 34.1 | 33.3 | 32.9 | 32.7 | 32.3 | 32.7 | 33.1 | 33.4 | 35.5 | 38.3 |
| 80° | 26.1 | 26.1 | 25.1 | 25.1 | 24.9 | 24.3 | 24.9 | 24.5 | 25.3 | 27.4 | 29.3 |
| 82.5° | 18.6 | 18.4 | 18.3 | 18.0 | 17.9 | 17.5 | 17.7 | 18.2 | 18.5 | 19.9 | 21.1 |
| 85° | 9.1 | 9.1 | 8.9 | 8.7 | 8.9 | 8.7 | 8.9 | 9.1 | 9.3 | 9.9 | 11.0 |
| 87.5° | 8.2 | 8.5 | 7.7 | 7.0 | 6.1 | 5.4 | 4.9 | 4.5 | 4.4 | 4.1 | 3.7 |
| 90° | 31.2 | 31.6 | 27.2 | 22.7 | 18.4 | 13.9 | 10.5 | 8.1 | 5.7 | 3.3 | 0.9 |
| 92.5° | 28.8 | 28.7 | 27.6 | 26.7 | 25.6 | 24.5 | 23.2 | 21.4 | 19.6 | 17.8 | 16.1 |
| 95° | 57.8 | 57.8 | 57.4 | 57.0 | 56.6 | 56.2 | 55.0 | 53.0 | 51.0 | 49.0 | 47.0 |
| 97.5° | 97.2 | 97.2 | 96.4 | 95.7 | 94.9 | 94.2 | 92.8 | 91.1 | 89.3 | 87.6 | 85.8 |
| 100° | 124.7 | 124.7 | 124.0 | 123.4 | 122.8 | 122.3 | 121.1 | 119.5 | 117.9 | 116.3 | 114.7 |
| 102.5° | 154.4 | 154.3 | 153.5 | 152.8 | 151.9 | 151.2 | 150.2 | 148.9 | 147.6 | 146.3 | 145.1 |
| 105° | 199.1 | 198.7 | 198.3 | 197.9 | 197.5 | 197.1 | 196.6 | 196.0 | 195.4 | 194.7 | 194.2 |
| 107.5° | 247.8 | 247.6 | 247.6 | 247.6 | 247.6 | 247.6 | 247.2 | 246.3 | 245.4 | 244.6 | 243.7 |
| 110° | 280.9 | 280.9 | 280.9 | 280.9 | 280.9 | 280.9 | 280.3 | 279.1 | 277.9 | 276.7 | 275.4 |



TEST NUMBER: P331478-940

CATALOG NUMBER: S122DIW-S290D970U940-4F0-1E-UDD-A1

CANDELA DISTRIBUTION (continued):

| | 220° | 225° | 230° | 235° | 240° | 245° | 250° | 255° | 260° | 265° | 270° |
|--------|--------|--------|--------|--------|--------|--------|--------|--------|--------|--------|--------|
| 112.5° | 314.3 | 314.9 | 315.0 | 315.1 | 315.3 | 315.5 | 315.0 | 313.8 | 312.5 | 311.4 | 310.1 |
| 115° | 364.7 | 364.9 | 365.2 | 365.7 | 366.0 | 366.5 | 366.0 | 364.9 | 363.6 | 362.5 | 361.2 |
| 117.5° | 413.9 | 414.4 | 415.5 | 416.6 | 417.8 | 418.8 | 418.7 | 417.1 | 415.4 | 413.8 | 412.2 |
| 120° | 446.2 | 446.2 | 447.8 | 449.4 | 451.0 | 452.6 | 452.6 | 451.0 | 449.4 | 447.8 | 446.2 |
| 122.5° | 480.4 | 480.8 | 482.0 | 483.1 | 484.2 | 485.4 | 484.9 | 483.0 | 481.1 | 479.2 | 477.2 |
| 125° | 530.5 | 531.1 | 531.6 | 532.3 | 532.9 | 533.5 | 532.9 | 531.1 | 529.2 | 527.4 | 525.7 |
| 127.5° | 579.1 | 579.9 | 580.6 | 581.3 | 582.0 | 582.7 | 581.9 | 579.7 | 577.4 | 575.1 | 572.8 |
| 130° | 612.0 | 612.3 | 612.8 | 613.1 | 613.6 | 613.9 | 612.9 | 610.3 | 607.6 | 605.0 | 602.4 |
| 132.5° | 644.7 | 645.6 | 645.5 | 645.4 | 645.3 | 645.2 | 644.2 | 642.0 | 639.9 | 637.8 | 635.6 |
| 135° | 691.6 | 691.8 | 691.4 | 691.0 | 690.6 | 690.2 | 688.9 | 686.7 | 684.5 | 682.3 | 680.1 |
| 137.5° | 737.2 | 737.4 | 736.8 | 736.3 | 735.8 | 735.3 | 734.1 | 732.3 | 730.5 | 728.7 | 726.8 |
| 140° | 767.7 | 767.7 | 766.7 | 765.7 | 764.7 | 763.7 | 762.2 | 760.5 | 758.7 | 756.9 | 755.0 |
| 142.5° | 795.3 | 795.1 | 794.5 | 793.8 | 793.1 | 792.5 | 791.2 | 789.3 | 787.6 | 785.8 | 784.0 |
| 145° | 837.4 | 837.2 | 836.1 | 834.8 | 833.7 | 832.4 | 831.2 | 829.7 | 828.3 | 826.9 | 825.5 |
| 147.5° | 874.1 | 873.7 | 872.9 | 872.1 | 871.3 | 870.5 | 869.2 | 867.5 | 865.9 | 864.2 | 862.6 |
| 150° | 897.4 | 896.9 | 896.1 | 895.3 | 894.5 | 893.7 | 892.6 | 891.4 | 890.2 | 889.0 | 887.8 |
| 152.5° | 920.7 | 920.0 | 919.0 | 918.0 | 917.1 | 916.1 | 915.1 | 913.8 | 912.7 | 911.4 | 910.3 |
| 155° | 950.2 | 949.2 | 948.6 | 948.1 | 947.4 | 946.8 | 946.2 | 945.7 | 945.0 | 944.4 | 943.8 |
| 157.5° | 977.3 | 976.0 | 975.6 | 975.3 | 974.9 | 974.6 | 974.1 | 973.7 | 973.3 | 972.9 | 972.5 |
| 160° | 993.8 | 992.6 | 992.4 | 992.2 | 992.0 | 991.8 | 991.5 | 991.0 | 990.7 | 990.2 | 989.9 |
| 162.5° | 1008.4 | 1007.0 | 1006.8 | 1006.7 | 1006.5 | 1006.2 | 1006.1 | 1006.0 | 1005.9 | 1005.8 | 1005.8 |
| 165° | 1027.4 | 1026.0 | 1026.0 | 1026.0 | 1026.0 | 1026.0 | 1026.1 | 1026.3 | 1026.5 | 1026.7 | 1026.9 |
| 167.5° | 1043.1 | 1041.7 | 1041.8 | 1041.8 | 1041.9 | 1041.9 | 1042.2 | 1042.8 | 1043.4 | 1044.0 | 1044.6 |
| 170° | 1051.8 | 1050.4 | 1050.6 | 1050.8 | 1051.0 | 1051.2 | 1051.6 | 1052.2 | 1052.8 | 1053.4 | 1054.0 |
| 172.5° | 1058.3 | 1056.9 | 1057.1 | 1057.3 | 1057.5 | 1057.7 | 1058.1 | 1058.7 | 1059.3 | 1059.9 | 1060.5 |
| 175° | 1065.3 | 1063.9 | 1064.3 | 1064.7 | 1065.1 | 1065.5 | 1066.0 | 1066.7 | 1067.3 | 1067.8 | 1068.4 |
| 177.5° | 1069.1 | 1068.1 | 1068.4 | 1068.7 | 1069.1 | 1069.3 | 1069.8 | 1070.2 | 1070.8 | 1071.2 | 1071.7 |
| 180° | 1070.2 | 1070.2 | 1070.2 | 1070.2 | 1070.2 | 1070.2 | 1070.2 | 1070.2 | 1070.2 | 1070.2 | 1070.2 |



TEST NUMBER: P331478-940

CATALOG NUMBER: S122DIW-S290D970U940-4F0-1E-UDD-A1

CANDELA DISTRIBUTION (continued):

| | 275° | 280° | 285° | 290° | 295° | 300° | 305° | 310° | 315° | 320° | 325° |
|--------|-------|-------|-------|-------|-------|-------|-------|-------|-------|-------|-------|
| 0° | 527.1 | 527.1 | 527.1 | 527.1 | 527.1 | 527.1 | 527.1 | 527.1 | 527.1 | 527.1 | 527.1 |
| 2.5° | 529.9 | 530.7 | 533.2 | 535.8 | 538.8 | 539.6 | 540.8 | 539.8 | 539.4 | 542.4 | 544.7 |
| 5° | 531.4 | 534.9 | 542.1 | 548.6 | 554.0 | 557.9 | 562.0 | 563.6 | 566.6 | 570.8 | 576.1 |
| 7.5° | 529.6 | 536.7 | 547.9 | 557.3 | 567.6 | 575.0 | 580.8 | 585.8 | 591.7 | 599.8 | 608.6 |
| 10° | 527.7 | 537.2 | 550.8 | 562.3 | 574.9 | 584.4 | 592.3 | 600.0 | 608.9 | 620.1 | 631.6 |
| 12.5° | 524.1 | 535.4 | 552.4 | 566.1 | 582.2 | 591.6 | 602.2 | 618.8 | 628.4 | 643.9 | 660.1 |
| 15° | 516.9 | 529.5 | 553.2 | 570.0 | 588.3 | 606.1 | 625.7 | 641.5 | 657.3 | 666.5 | 689.3 |
| 17.5° | 506.3 | 524.7 | 551.0 | 570.6 | 593.8 | 621.8 | 643.9 | 661.8 | 680.0 | 694.8 | 706.3 |
| 20° | 497.7 | 517.7 | 547.8 | 571.2 | 598.8 | 628.9 | 654.2 | 672.5 | 688.3 | 700.7 | 707.8 |
| 22.5° | 486.9 | 512.1 | 541.3 | 568.8 | 604.0 | 633.8 | 660.4 | 674.8 | 688.0 | 694.0 | 696.8 |
| 25° | 469.8 | 500.2 | 533.2 | 566.8 | 606.5 | 638.1 | 662.4 | 671.1 | 674.9 | 669.1 | 659.3 |
| 27.5° | 451.3 | 485.2 | 523.8 | 562.9 | 604.9 | 635.3 | 652.7 | 651.4 | 644.9 | 625.8 | 610.6 |
| 30° | 437.6 | 474.8 | 516.3 | 559.1 | 601.2 | 630.8 | 640.9 | 630.8 | 616.0 | 594.8 | 573.0 |
| 32.5° | 423.1 | 461.7 | 508.4 | 553.6 | 594.4 | 620.5 | 622.6 | 605.2 | 582.3 | 558.1 | 531.1 |
| 35° | 401.3 | 443.0 | 493.5 | 541.3 | 580.0 | 596.4 | 586.7 | 555.8 | 528.7 | 495.7 | 458.8 |
| 37.5° | 376.6 | 422.7 | 473.2 | 523.3 | 558.3 | 562.6 | 538.4 | 506.0 | 467.7 | 428.9 | 385.5 |
| 40° | 358.1 | 407.0 | 459.1 | 509.4 | 540.5 | 536.0 | 505.2 | 469.6 | 424.0 | 376.6 | 336.3 |
| 42.5° | 341.6 | 390.4 | 443.4 | 492.9 | 517.7 | 505.5 | 469.6 | 425.8 | 376.8 | 332.2 | 295.2 |
| 45° | 313.0 | 363.2 | 417.5 | 465.3 | 479.5 | 457.4 | 409.8 | 361.1 | 313.0 | 275.7 | 246.6 |
| 47.5° | 285.2 | 334.8 | 388.6 | 430.6 | 435.6 | 405.9 | 353.9 | 303.9 | 262.4 | 232.1 | 211.5 |
| 50° | 264.7 | 314.6 | 367.8 | 405.4 | 403.7 | 367.8 | 314.4 | 266.8 | 232.1 | 207.6 | 193.9 |
| 52.5° | 246.5 | 293.6 | 344.6 | 378.8 | 370.1 | 331.1 | 280.0 | 237.7 | 209.3 | 190.1 | 177.6 |
| 55° | 217.9 | 261.5 | 310.1 | 337.5 | 321.6 | 278.3 | 235.1 | 201.2 | 180.0 | 165.7 | 156.0 |
| 57.5° | 189.7 | 230.5 | 272.2 | 289.0 | 271.5 | 231.5 | 195.6 | 170.9 | 155.0 | 144.4 | 138.0 |
| 60° | 172.2 | 207.9 | 244.9 | 259.5 | 238.6 | 203.0 | 174.6 | 152.6 | 139.7 | 131.1 | 125.4 |
| 62.5° | 154.7 | 186.6 | 221.6 | 229.5 | 210.4 | 180.3 | 155.2 | 136.8 | 126.4 | 118.6 | 113.2 |
| 65° | 130.8 | 157.0 | 183.5 | 188.8 | 171.2 | 147.8 | 128.0 | 116.1 | 106.7 | 101.1 | 96.8 |
| 67.5° | 107.4 | 128.3 | 147.1 | 151.3 | 135.9 | 119.8 | 105.4 | 95.0 | 88.7 | 84.0 | 80.3 |
| 70° | 93.4 | 110.0 | 125.4 | 128.9 | 116.5 | 102.1 | 91.1 | 82.8 | 77.1 | 73.1 | 69.6 |
| 72.5° | 78.6 | 92.5 | 105.3 | 107.6 | 97.6 | 86.5 | 77.6 | 71.0 | 66.0 | 63.4 | 60.1 |
| 75° | 60.2 | 68.3 | 78.2 | 78.8 | 72.1 | 65.5 | 58.6 | 54.3 | 51.6 | 48.4 | 46.8 |
| 77.5° | 42.4 | 48.8 | 54.5 | 55.6 | 51.6 | 47.1 | 43.2 | 39.9 | 37.6 | 36.1 | 34.6 |
| 80° | 32.4 | 37.5 | 39.9 | 41.3 | 38.5 | 35.2 | 33.0 | 30.8 | 29.3 | 28.4 | 27.4 |
| 82.5° | 23.2 | 26.3 | 28.5 | 29.7 | 28.1 | 26.1 | 24.0 | 22.6 | 21.6 | 20.8 | 20.4 |
| 85° | 11.8 | 13.2 | 14.6 | 15.0 | 14.6 | 13.7 | 12.6 | 12.6 | 11.9 | 11.8 | 11.8 |
| 87.5° | 4.7 | 5.9 | 6.3 | 7.3 | 7.7 | 8.6 | 9.5 | 10.2 | 10.9 | 10.6 | 10.3 |
| 90° | 3.3 | 5.7 | 8.1 | 10.5 | 13.9 | 18.4 | 22.7 | 27.2 | 31.6 | 31.2 | 30.8 |
| 92.5° | 17.8 | 19.6 | 21.4 | 23.2 | 24.5 | 25.6 | 26.7 | 27.6 | 28.7 | 28.8 | 28.9 |
| 95° | 49.0 | 51.0 | 53.0 | 55.0 | 56.2 | 56.6 | 57.0 | 57.4 | 57.8 | 57.8 | 57.8 |
| 97.5° | 87.6 | 89.3 | 91.1 | 92.8 | 94.2 | 94.9 | 95.7 | 96.4 | 97.2 | 97.2 | 97.2 |
| 100° | 116.3 | 117.9 | 119.5 | 121.1 | 122.3 | 122.8 | 123.4 | 124.0 | 124.7 | 124.7 | 124.7 |
| 102.5° | 146.3 | 147.6 | 148.9 | 150.2 | 151.2 | 151.9 | 152.8 | 153.5 | 154.3 | 154.4 | 154.6 |
| 105° | 194.7 | 195.4 | 196.0 | 196.6 | 197.1 | 197.5 | 197.9 | 198.3 | 198.7 | 199.1 | 199.5 |
| 107.5° | 244.6 | 245.4 | 246.3 | 247.2 | 247.6 | 247.6 | 247.6 | 247.6 | 247.6 | 247.8 | 248.0 |
| 110° | 276.7 | 277.9 | 279.1 | 280.3 | 280.9 | 280.9 | 280.9 | 280.9 | 280.9 | 280.9 | 280.9 |



TEST NUMBER: P331478-940

CATALOG NUMBER: S122DIW-S290D970U940-4F0-1E-UDD-A1

CANDELA DISTRIBUTION (continued):

| | 275° | 280° | 285° | 290° | 295° | 300° | 305° | 310° | 315° | 320° | 325° |
|--------|--------|--------|--------|--------|--------|--------|--------|--------|--------|--------|--------|
| 112.5° | 311.4 | 312.5 | 313.8 | 315.0 | 315.5 | 315.3 | 315.1 | 315.0 | 314.9 | 314.3 | 313.9 |
| 115° | 362.5 | 363.6 | 364.9 | 366.0 | 366.5 | 366.0 | 365.7 | 365.2 | 364.9 | 364.7 | 364.4 |
| 117.5° | 413.8 | 415.4 | 417.1 | 418.7 | 418.8 | 417.8 | 416.6 | 415.5 | 414.4 | 413.9 | 413.4 |
| 120° | 447.8 | 449.4 | 451.0 | 452.6 | 452.6 | 451.0 | 449.4 | 447.8 | 446.2 | 446.2 | 446.2 |
| 122.5° | 479.2 | 481.1 | 483.0 | 484.9 | 485.4 | 484.2 | 483.1 | 482.0 | 480.8 | 480.4 | 479.9 |
| 125° | 527.4 | 529.2 | 531.1 | 532.9 | 533.5 | 532.9 | 532.3 | 531.6 | 531.1 | 530.5 | 529.9 |
| 127.5° | 575.1 | 577.4 | 579.7 | 581.9 | 582.7 | 582.0 | 581.3 | 580.6 | 579.9 | 579.1 | 578.4 |
| 130° | 605.0 | 607.6 | 610.3 | 612.9 | 613.9 | 613.6 | 613.1 | 612.8 | 612.3 | 612.0 | 611.5 |
| 132.5° | 637.8 | 639.9 | 642.0 | 644.2 | 645.2 | 645.3 | 645.4 | 645.5 | 645.6 | 644.7 | 643.8 |
| 135° | 682.3 | 684.5 | 686.7 | 688.9 | 690.2 | 690.6 | 691.0 | 691.4 | 691.8 | 691.6 | 691.4 |
| 137.5° | 728.7 | 730.5 | 732.3 | 734.1 | 735.3 | 735.8 | 736.3 | 736.8 | 737.4 | 737.2 | 737.0 |
| 140° | 756.9 | 758.7 | 760.5 | 762.2 | 763.7 | 764.7 | 765.7 | 766.7 | 767.7 | 767.7 | 767.7 |
| 142.5° | 785.8 | 787.6 | 789.3 | 791.2 | 792.5 | 793.1 | 793.8 | 794.5 | 795.1 | 795.3 | 795.5 |
| 145° | 826.9 | 828.3 | 829.7 | 831.2 | 832.4 | 833.7 | 834.8 | 836.1 | 837.2 | 837.4 | 837.7 |
| 147.5° | 864.2 | 865.9 | 867.5 | 869.2 | 870.5 | 871.3 | 872.1 | 872.9 | 873.7 | 874.1 | 874.6 |
| 150° | 889.0 | 890.2 | 891.4 | 892.6 | 893.7 | 894.5 | 895.3 | 896.1 | 896.9 | 897.4 | 898.0 |
| 152.5° | 911.4 | 912.7 | 913.8 | 915.1 | 916.1 | 917.1 | 918.0 | 919.0 | 920.0 | 920.7 | 921.5 |
| 155° | 944.4 | 945.0 | 945.7 | 946.2 | 946.8 | 947.4 | 948.1 | 948.6 | 949.2 | 950.2 | 951.3 |
| 157.5° | 972.9 | 973.3 | 973.7 | 974.1 | 974.6 | 974.9 | 975.3 | 975.6 | 976.0 | 977.3 | 978.7 |
| 160° | 990.2 | 990.7 | 991.0 | 991.5 | 991.8 | 992.0 | 992.2 | 992.4 | 992.6 | 993.8 | 995.0 |
| 162.5° | 1005.8 | 1005.9 | 1006.0 | 1006.1 | 1006.2 | 1006.5 | 1006.7 | 1006.8 | 1007.0 | 1008.4 | 1009.8 |
| 165° | 1026.7 | 1026.5 | 1026.3 | 1026.1 | 1026.0 | 1026.0 | 1026.0 | 1026.0 | 1026.0 | 1027.4 | 1028.9 |
| 167.5° | 1044.0 | 1043.4 | 1042.8 | 1042.2 | 1041.9 | 1041.9 | 1041.8 | 1041.8 | 1041.7 | 1043.1 | 1044.6 |
| 170° | 1053.4 | 1052.8 | 1052.2 | 1051.6 | 1051.2 | 1051.0 | 1050.8 | 1050.6 | 1050.4 | 1051.8 | 1053.2 |
| 172.5° | 1059.9 | 1059.3 | 1058.7 | 1058.1 | 1057.7 | 1057.5 | 1057.3 | 1057.1 | 1056.9 | 1058.3 | 1059.7 |
| 175° | 1067.8 | 1067.3 | 1066.7 | 1066.0 | 1065.5 | 1065.1 | 1064.7 | 1064.3 | 1063.9 | 1065.3 | 1066.8 |
| 177.5° | 1071.2 | 1070.8 | 1070.2 | 1069.8 | 1069.3 | 1069.1 | 1068.7 | 1068.4 | 1068.1 | 1069.1 | 1070.1 |
| 180° | 1070.2 | 1070.2 | 1070.2 | 1070.2 | 1070.2 | 1070.2 | 1070.2 | 1070.2 | 1070.2 | 1070.2 | 1070.2 |



TEST NUMBER: P331478-940

CATALOG NUMBER: S122DIW-S290D970U940-4F0-1E-UDD-A1

CANDELA DISTRIBUTION (continued):

| | 330° | 335° | 340° | 345° | 350° | 355° | 360° |
|--------|-------|-------|-------|-------|-------|-------|-------|
| 0° | 527.1 | 527.1 | 527.1 | 527.1 | 527.1 | 527.1 | 527.1 |
| 2.5° | 546.7 | 548.9 | 548.9 | 549.3 | 551.9 | 551.5 | 551.3 |
| 5° | 581.8 | 585.2 | 585.6 | 589.2 | 591.7 | 590.8 | 588.6 |
| 7.5° | 614.8 | 621.3 | 626.2 | 628.8 | 632.0 | 634.0 | 633.1 |
| 10° | 641.1 | 650.4 | 656.1 | 660.0 | 664.6 | 668.1 | 666.8 |
| 12.5° | 664.9 | 676.0 | 683.9 | 690.5 | 691.0 | 695.4 | 692.4 |
| 15° | 702.1 | 713.8 | 715.1 | 719.9 | 723.8 | 723.4 | 723.5 |
| 17.5° | 714.3 | 718.1 | 718.9 | 719.0 | 719.1 | 717.6 | 714.5 |
| 20° | 710.0 | 708.6 | 705.2 | 702.5 | 697.9 | 697.2 | 693.2 |
| 22.5° | 689.2 | 684.7 | 676.1 | 670.4 | 663.2 | 661.3 | 660.1 |
| 25° | 648.5 | 638.5 | 624.7 | 611.5 | 607.9 | 600.8 | 602.8 |
| 27.5° | 592.4 | 576.9 | 562.0 | 551.3 | 541.6 | 531.0 | 534.0 |
| 30° | 553.0 | 535.6 | 514.5 | 498.3 | 487.9 | 477.9 | 476.0 |
| 32.5° | 506.0 | 480.5 | 457.0 | 442.7 | 426.9 | 420.4 | 413.5 |
| 35° | 425.0 | 400.0 | 376.7 | 356.7 | 345.2 | 336.3 | 328.1 |
| 37.5° | 352.1 | 323.4 | 304.6 | 288.4 | 280.0 | 274.9 | 276.3 |
| 40° | 306.9 | 281.8 | 268.0 | 255.7 | 247.9 | 244.3 | 245.1 |
| 42.5° | 270.3 | 251.5 | 240.1 | 231.7 | 226.2 | 224.2 | 223.7 |
| 45° | 228.7 | 218.2 | 208.8 | 204.0 | 201.3 | 199.1 | 197.7 |
| 47.5° | 200.4 | 191.7 | 186.5 | 183.6 | 181.3 | 179.1 | 179.0 |
| 50° | 183.3 | 177.6 | 174.0 | 170.9 | 169.2 | 167.6 | 169.0 |
| 52.5° | 170.3 | 165.1 | 161.5 | 158.8 | 158.1 | 156.7 | 156.6 |
| 55° | 151.1 | 147.0 | 144.5 | 142.0 | 140.8 | 140.0 | 138.9 |
| 57.5° | 133.6 | 129.7 | 127.3 | 125.8 | 123.5 | 122.7 | 122.3 |
| 60° | 121.1 | 118.1 | 115.7 | 113.6 | 112.6 | 111.0 | 111.0 |
| 62.5° | 109.6 | 106.6 | 104.3 | 102.8 | 101.1 | 100.5 | 100.7 |
| 65° | 93.0 | 90.5 | 88.3 | 86.7 | 86.3 | 85.1 | 85.5 |
| 67.5° | 77.7 | 76.1 | 73.7 | 72.8 | 72.1 | 71.4 | 70.9 |
| 70° | 67.4 | 65.8 | 64.6 | 63.4 | 62.8 | 62.8 | 62.8 |
| 72.5° | 58.9 | 56.9 | 56.2 | 54.7 | 55.0 | 54.4 | 53.7 |
| 75° | 45.6 | 44.3 | 43.8 | 43.2 | 42.2 | 42.2 | 42.2 |
| 77.5° | 33.5 | 33.2 | 32.5 | 31.8 | 31.6 | 31.4 | 31.5 |
| 80° | 25.9 | 25.7 | 25.3 | 25.3 | 24.9 | 24.7 | 24.3 |
| 82.5° | 20.0 | 19.4 | 19.2 | 19.0 | 18.9 | 18.9 | 18.8 |
| 85° | 11.3 | 11.0 | 11.0 | 11.1 | 10.7 | 10.7 | 11.0 |
| 87.5° | 10.4 | 10.3 | 10.2 | 10.3 | 10.4 | 10.3 | 10.3 |
| 90° | 30.4 | 30.0 | 29.9 | 30.1 | 30.3 | 30.5 | 30.7 |
| 92.5° | 29.0 | 29.1 | 29.1 | 29.2 | 29.2 | 29.2 | 29.2 |
| 95° | 57.8 | 57.8 | 57.6 | 57.2 | 56.8 | 56.4 | 56.0 |
| 97.5° | 97.2 | 97.2 | 97.2 | 97.1 | 97.1 | 97.0 | 97.0 |
| 100° | 124.7 | 124.7 | 124.6 | 124.3 | 124.1 | 123.9 | 123.8 |
| 102.5° | 154.7 | 154.9 | 154.9 | 154.7 | 154.4 | 154.3 | 154.1 |
| 105° | 199.9 | 200.3 | 200.5 | 200.5 | 200.5 | 200.5 | 200.5 |
| 107.5° | 248.2 | 248.3 | 247.9 | 247.0 | 246.0 | 245.1 | 244.2 |
| 110° | 280.9 | 280.9 | 280.6 | 280.0 | 279.4 | 278.7 | 278.2 |



TEST NUMBER: P331478-940

CATALOG NUMBER: S122DIW-S290D970U940-4F0-1E-UDD-A1

CANDELA DISTRIBUTION (continued):

| | 330° | 335° | 340° | 345° | 350° | 355° | 360° |
|--------|--------|--------|--------|--------|--------|--------|--------|
| 112.5° | 313.4 | 312.9 | 312.5 | 312.0 | 311.6 | 311.1 | 310.7 |
| 115° | 364.3 | 364.1 | 363.6 | 363.1 | 362.5 | 361.9 | 361.2 |
| 117.5° | 413.0 | 412.4 | 411.9 | 411.3 | 410.7 | 410.1 | 409.5 |
| 120° | 446.2 | 446.2 | 445.9 | 445.2 | 444.7 | 444.1 | 443.4 |
| 122.5° | 479.4 | 478.9 | 478.5 | 478.0 | 477.6 | 477.2 | 476.7 |
| 125° | 529.2 | 528.7 | 528.2 | 528.1 | 527.9 | 527.6 | 527.4 |
| 127.5° | 577.7 | 576.9 | 576.2 | 575.6 | 575.0 | 574.4 | 573.7 |
| 130° | 611.2 | 610.7 | 610.1 | 609.3 | 608.5 | 607.7 | 606.9 |
| 132.5° | 642.9 | 642.0 | 641.3 | 640.7 | 640.0 | 639.4 | 638.7 |
| 135° | 691.3 | 691.0 | 690.6 | 690.0 | 689.4 | 688.8 | 688.2 |
| 137.5° | 736.9 | 736.7 | 736.2 | 735.4 | 734.6 | 733.8 | 733.0 |
| 140° | 767.7 | 767.7 | 767.3 | 766.5 | 765.7 | 764.9 | 764.1 |
| 142.5° | 795.7 | 795.8 | 795.5 | 794.7 | 793.9 | 793.1 | 792.3 |
| 145° | 837.9 | 838.0 | 837.8 | 837.0 | 836.2 | 835.4 | 834.6 |
| 147.5° | 875.0 | 875.5 | 875.3 | 874.6 | 873.8 | 873.1 | 872.3 |
| 150° | 898.7 | 899.3 | 899.3 | 898.7 | 898.0 | 897.4 | 896.9 |
| 152.5° | 922.3 | 923.0 | 923.0 | 922.3 | 921.5 | 920.7 | 920.0 |
| 155° | 952.3 | 953.2 | 953.4 | 952.9 | 952.3 | 951.6 | 951.0 |
| 157.5° | 980.1 | 981.4 | 981.6 | 980.7 | 979.7 | 978.7 | 977.8 |
| 160° | 996.2 | 997.4 | 997.6 | 996.8 | 996.0 | 995.2 | 994.4 |
| 162.5° | 1011.1 | 1012.5 | 1012.7 | 1011.7 | 1010.8 | 1009.8 | 1008.9 |
| 165° | 1030.2 | 1031.6 | 1031.8 | 1030.8 | 1029.8 | 1028.9 | 1027.8 |
| 167.5° | 1046.0 | 1047.3 | 1047.5 | 1046.5 | 1045.4 | 1044.4 | 1043.4 |
| 170° | 1054.6 | 1056.1 | 1056.1 | 1054.9 | 1053.7 | 1052.5 | 1051.3 |
| 172.5° | 1061.1 | 1062.5 | 1062.7 | 1061.4 | 1060.2 | 1059.0 | 1057.8 |
| 175° | 1068.2 | 1069.5 | 1069.7 | 1068.4 | 1067.3 | 1066.0 | 1064.9 |
| 177.5° | 1070.9 | 1071.9 | 1071.9 | 1070.9 | 1070.1 | 1069.1 | 1068.1 |
| 180° | 1070.2 | 1070.2 | 1070.2 | 1070.2 | 1070.2 | 1070.2 | 1070.2 |

(END OF REPORT)